



# THE AUSTRALIAN POLL DORSET

## JOURNAL

VOLUME 51 / NUMBER 2

SEPTEMBER 2021

Put a Poll Dorset  
IN YOUR CORNER



INSIDE  
THIS ISSUE...

LEAN MEAT %	
50 - 53	53 - 57
\$6.80	\$7.20
\$7.80	\$8.20
\$8.00	\$8.30
\$7.85	\$8.05
\$5	\$6.54

**WORLD FIRST  
IMF GRID**  
Page 14-15



**RAM SALE  
SEASON**  
PAGE 25



**SUPREME AT STATE  
SHEEP SHOWS**  
PAGE 33-34



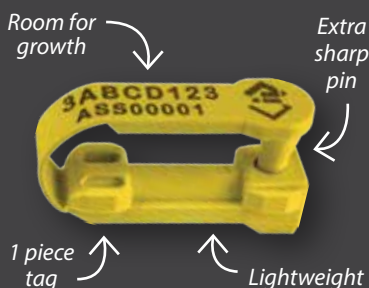
**Shearwell  
Data**

**Livestock Systems**

## HOW WELL DO YOU KNOW YOUR ANIMALS?

Remove error, eliminate guess work and reduce effort, with Shearwells livestock identification and management solutions.

**Industry leading** electronic & visual tags (*NLIS accredited*), with 99.5% retention rates (*Printing, with multiple layouts available, included in tag price*).



**EID scanning equipment** specially designed to assist with livestock management (*Stick & Panel Readers, Weigh Crates, Auto drafters, etc*).



**Contact Shearwell direct** for a hassle-free friendly service handled by our professional dedicated staff, with multiple payment and ordering options.



**CONTACT  
SHEARWELL  
TODAY!**

**Working to help the livestock farmer**

1800 998 934  
[sales@shearwell.com.au](mailto:sales@shearwell.com.au)  
[www.shearwell.com.au](http://www.shearwell.com.au)



## PRESIDENT'S MESSAGE



*Well the last two years haven't exactly gone as I thought they would when I took on this role. No travelling interstate, few events, board meetings via Zoom, but regardless of the abnormality of this time, I hope my time as President has had a positive impact on our breed.*

It has been a pleasure working with Margot, Sam and Patrick in the office, and I am sure you will all agree it is easy to deal with them for any enquiries. They really have become part of our Poll Dorset family.

Ram selling season is gearing up to be a record breaker. Prime lamb profitability is at an all time high, and farmers are purchasing and joining ewes to take advantage of this. We will likely see some new ram buying clients come into the market, so be ready to assist them find the ram genetics to suit their needs. Having a good understanding of what they are targeting in their lamb production is key to getting ram selection correct.

There is a fair bit of uncertainty surrounding ram sales and clients ability to attend events. This hesitation is understandable given the risk of quarantine, lockdowns and transmission of infection. Great to see Poll Dorset breeders including presale inspection days, online bidding options, catalogues and videos ahead of sale day. These should give sales the capacity to be successful, even if clients are unable to attend in person.

The lamb market is still going gang busters, with an exceptional price of \$331 paid for some sucker lambs at Wagga Wagga. They were very big lambs, which just shows high growth from the right genetics really pays off quickly! Sired by Poll Dorset rams of course!

I recently spoke to a group of Poll Dorset breeders about finding the highest value ram genetics. Commercial value is found in traits that give a low cost of carry PLUS a high priced output. With meat processors starting to pay on quality of carcase, a value based approach to input of genetics will be more and more important. A heavy carcase will no longer be the only way to be paid the highest dollars.

Thank you to all the APDA board members who have supported me in this role and helped "get stuff done" in the last two years, it has been great working with you all, and I much appreciate your time, skills and decision making.

We can all be thankful for our wide open spaces, our essential work places, and the amazing people that we get to work with in the wider agricultural community. I know I don't want any other job!



## THE AUSTRALIAN POLL DORSET JOURNAL

The Australian Poll Dorset Journal is the official journal of the Australian Poll Dorset Association Inc.

### President

Isabele Roberts

### Vice President

Geoff Davey

### CEO & Secretary

Margot Falconer  
secretary@polldorset.org.au

### Advertising Sales

Patrick Falconer  
marketing@polldorset.org.au

### Journal Editor

Jamie-Lee Oldfield  
communications@polldorset.org.au

### Administration & Graphic Design

Sam Garland  
sam@polldorset.org.au

### Address for correspondence

Australian Poll Dorset Association Inc.  
Unit 1/6 Merino Court  
East Bendigo, VIC 3550

**Telephone:** (03) 5443 9902

**Fax:** (03) 5443 9354

**Email:** secretary@polldorset.org.au  
www.polldorset.org.au  
ABN: 65 206 172 969

*The Australian Poll Dorset Association Inc reserves the right to accept or reject any advertisement submitted for publication in the Australian Poll Dorset Journal. It is the responsibility of the advertiser, member or advertising agency concerned, to ensure that the advertising complies with the provisions of the Trade Practices Act 1974 relating to advertising. While every effort is made to publish advertisements as ordered, no responsibility is taken for the failure of an advertisement to appear as ordered. Opinions expressed in the Australian Poll Dorset Journal are not necessarily those of the Association or its journal editor.*



# BOWAN PARK

POLL DORSET RESEARCH FLOCK

## 2021 OPEN DAY

Friday 10th September

12noon

Presentation of data and discussion 2pm

All lambs will be on display

### SIRES OF THE 2020 COHORT

Derrynock 190156

Linton 160625

Pepperton 190123

Tattykeel 170400

Valley Vista 200086

Fairbank 190299

Linton 170232

Rene 190247

Springwaters 180022

Hildden 190110

Janmac 190021

Rangeview 190045

Shirlee Downs 190408

Gooramma 170313

Ridgehaven 190083



2022 Sire nominations open mid September

[WWW.BOWANPARK.COM.AU](http://WWW.BOWANPARK.COM.AU)



## CONTENTS

President's message	3
Across the Pens	5
Promotions Officer Report	6
Industry News: Poll Dorset lambs break own national sucker record price	7
Sheep Industry Shorts	8
Youth Yarns	9
Member Focus: PD members lead the way	13
Industry News: Early results in on Gundagai's world-first lamb IMF grid	14
Industry News: Lambs on hand up 35% as flock rebuild continues	17
Markets: Rain grows flock faster	19
Markets: Poll Dorset lambs average 11% price increase YOY since 2016	20
Markets: New season lambs leaping onto the box in 2021	21
Spring Season: Ram sales set for success	25
Sheep Genetics: Getting your genetics in sheep shape	27
Animal Health: Sheep producers to flock online to improve on-farm biosecurity	29
Breeder Profile: Janmac champions in trade	30
Around the shows: NSW State Sheep Show	33
Around the shows: Victorian Sheep Show	34
Around the shows: Campbelltown Show	36
Around the shows: NSW Dorset Championships	38
Around the shows: Naracoorte-Hamilton Field Day	41
Semen Sire Directory	43
Across the ditch: Obituary Jack Kirk	47
Across the ditch: NZ young breeder spotlight	48
From the Archives: Melbourne Royal 1996	50
Sale Dates	52
Advertising Rates	55

## ADVERTISER INDEX

Shearwell	2	Abelene Park	35
Bowan Park	4	Newbold	37
Coledale	6	Armdale Park	39
Marocara	10	Shellal	40
Derrynock	12	Springwaters	42
Zoetis	14	Stockscan	44
Valley Vista	16	Ulandi Park	46
Glenore	18	Bruan	47
Gooramma	22	Janmac	48
Hillden	23	Wunnamurra	49
Bright Side	24	Wrattenbullie	50
Konongwootong	26	Yentrac	51
Loughrea	27	Armdale	53
Kurralea	28	Commander Ag Quip	54
Michell Wool	29	Pepperton	55
Aberdeen/Hovell	30	Bromar	56
Mallee Park	32		

## ACROSS THE PENS

### COVID CONTINUES

Last year in this issue of the Journal we spoke of the lack of Spring shows due to Covid-19 and all firmly believed this would be well over by 2021. So here we are again in September bemoaning the lack of shows and congratulating those who were lucky enough to hold an event of any kind. We are thinking of each and everyone of you in all states of Australia who are experiencing lockdowns and particularly those who will have an impact on their business. This year we are reporting a large number of Ram Sales in the Journal and on our website so congratulations to you all and we hope your sales are a huge success.



### FLOCK BOOK

This year's Flock book will be with you all by the end of this month. Thank you to everyone who completed their returns early and provided us with accurate information on their flock numbers and ram pedigrees. The success of the APDA is dependent on all members playing their part to ensure the purity of our breed and the continued success of the Poll Dorset as the premium meat sheep in Australia.

### DECEMBER JOURNAL

The December Journal will carry results of all sales so please send your sale information to [secretary@polldorset.org.au](mailto:secretary@polldorset.org.au) by November 10th.





## PROMOTIONS OFFICER REPORT

Jamie-Lee, Sam and the team have been very busy getting our advertising programme organised. The theme for this season is centred around a "Boxing theme". Some ads have already appeared in the ACM Press, and there has been some very positive feedback.

Geoff Davey and I have been working on the purchase of promotional merchandise. Covid restrictions are playing havoc with the supply of materials, but most things should be available in the next few weeks. If anyone would like some of this merchandise, please contact Head Office. Our aim is to have a stock of items ready for when events are permitted again. Enclosed in this PD Journal is a bumper sticker that we hope members will display in a prominent place.

At the moment we have on hand.

- High vis yellow embroidered beanies
- Embroidered royal blue beanies
- High vis yellow embroidered bucket hats
- Embroidered royal blue bucket hats

The bucket hats carry an AntiCancer Council classification as they have a nice broad brim and are made from easy breath material. All these hats are designed to wash well and stand up to tough treatment. There are also some tradition blue PD caps. Very shortly there will also be some stubbie holders. We are also going to trial some printed tablecloths. They will fit the plastic modular tables that are usually used at events. The items will also be used in the New Member Packs.

We have been able to purchase these items using the flock ram levy funds. As always, the Promotions committee would welcome any suggestions from members as to what they would find useful when promoting Poll Dorsets and where they feel we can get the most value for our money.

Currently Sam is putting the final touches to the last of our publicity ads. In addition to using them in our current media program, our aim is to reproduce these ads as A3 posters and other relevant leaflets. These will also be available to distribution at events.

Jamie-Lee has held a photo shoot which has added to our library of photos, but we need more. There have been some good editorials in the newspapers. Covid restrictions have made it difficult for her to attend events. It would be greatly appreciated if members could take photos of rams, lambs, ewes, carcasses, and prime lambs, paddock shots, groups, or single animals. We are trying to develop a library of photos so we can take advantage of any promotional activities.

It is very difficult to find prime lamb producers who are willing to have their story published. Our team would be interested in any stories of great prices, lambing percentages, and other topics that would promote our breed. Please contact Jamie-Lee Oldfield or Margot Falconer at head office if you have someone in mind.

Alistair Sutherland

### CALENDAR OF EVENTS

<b>AUG 29</b>	Australasian Dorset Sale
<b>SEP 6</b>	Royal Adelaide Show Elite Ram Sale
<b>SEP 25-OCT 2</b>	Royal Perth Show
<b>OCT 7</b>	Royal Launceston Show
<b>OCT 21</b>	Royal Hobart Show

**Annual Sale**  
**23rd September 2021**  
**at 1.00pm**

- Offering 130 Rams
- On property Auction interfaced with AuctionsPlus
- Rams of Visual Excellence and Balanced Indexes
- Including 10 Specially Selected Rams



*Brucellosis accredited OJD vaccinated  
Lambplan performance tested*



Contact Wallace and Sue Binnie 03 5765 2236 or 0427 944 035 [wbinnie@bigpond.com](mailto:wbinnie@bigpond.com)  
Kirsty Taylor : 0437 054 694 [sutchtaylor@westnet.com.au](mailto:sutchtaylor@westnet.com.au)





# Poll Dorset lambs break own national sucker record price

Poll Dorset sired new season lambs have reached a new national saleyard record price, selling for \$331.20.

Sold through Wagga Wagga, the lambs were bred by Gordon and Wayne Rodham, Uranquinty, NSW and purchased by Geelong, Victoria, processors M.C. Herd.

The brothers bet their own previously held record of \$320 they set in 2018.

The lambs were sold by Mark Logan from RH Blake & Co, and Meat and Livestock Australia estimate they were 31kg carcase weight.

New season lambs are already dominating yardings in NSW, and average price for suckers has reached a state record, according to Meat and Livestock Australia.

"NSW has been doing the heavy lifting in terms of supply volumes since June, accounting for 80 per cent of the 109,000 new season lambs yarded in the eastern states.

"The price of NSW's young lambs has not been affected by supply upticks, showing the resilience and strength of the current market to cope with larger offerings across the saleyards.

"For the week ending Friday 15 August, young lambs in NSW averaged \$230/head, the highest weekly average price ever recorded in current monetary terms for the state.

"The price has appreciated 41 per cent, or \$95a head, since the first week of June."

The national trade lamb indicator jumped considerably in late August, reaching 938c/kg in the third week - 291c/kg higher than the same time the previous year.

It was within 1 per cent of the record of 949c/kg set in 2019, and comes as a major NSW processors has had to close due to Covid-19 restrictions.

All national lamb indicators were sitting significantly higher year-on-year, with heavy lamb up a whopping 367c/kg to 974c/kg, and restockers just shy of \$10 at 999c/kg, 338c/kg up on the 2020 price.



*The \$331.20 record breaking sucker lambs.  
Photo: Mark Logan, RH Blake & Co*

# Punch Up Your PRICES\$ With a Poll Dorset



[www.polldorset.org.au](http://www.polldorset.org.au)





### Spring weather outlook

Above median spring rainfall likely for eastern two-thirds of Australia but below median for north-west Australia and western Tasmania

Rainfall for spring (September to November) is likely to be above median for south-east WA, the NT, SA, Queensland, NSW, Victoria and eastern Tasmania (chance of exceeding median is greater than 60%). Much of south-east Australia, extending into central Australia, shows a greater than 80% chance, as do parts of the northern Queensland coast and eastern Tasmania. Conversely, north-west WA and western Tasmania are likely to have below median rainfall (chance of exceeding the median is less than 40%).

The pattern for the months of September and October is similar to the spring outlook, though the likelihood of exceeding the median rainfall is not as high in the eastern two-thirds of the country, and north-west WA doesn't have increased chances of being below median.

Past accuracy for September to November rainfall is high to very high for most of Australia, but moderate accuracy for southern and far north WA shifting to low accuracy for remaining areas of WA.

### UK trade deal on the horizon

Sheep Producers Australia (SPA) welcomed the announcement by Prime Minister Scott Morrison and Boris Johnson that the free trade deal with the United Kingdom is the most comprehensive and ambitious in Australia's history.

The broad outlines of the Australia-UK Free Trade Agreement (FTA) have now been agreed and will provide greater access and a significant boost to the UK market for Australian producers and farmers.

"This means that sheep meat tariffs will be eliminated after ten years. Australia will have immediate access to a duty-free quota of 25,000 tonnes, rising in equal instalments to 75,000 tonnes in year 10. In the first five years a safeguard will apply on sheep meat imports exceeding a further volume threshold rising in equal instalments to 125,000 tonnes, levying a tariff safeguard duty of 20% for the rest of the calendar year."

"FTA negotiations are all about opening up options for the Australian producers as well as the UK consumer and will be of mutual benefit." says Mr Stephen Crisp SPA CEO.

The next step is to finalise the agreement in writing to enable signatures and subsequent entry into force of the FTA.

"Now is a very good time to demonstrate that supply options from Australia will be of great benefit to the UK and Australia." says Mr Crisp.

"SPA appreciates and acknowledges the efforts of the Federal Government by having negotiated this ambitious bilateral free trade agreement that will offer sheep producers greater market access. We would also like to thank Meat & Livestock Australia and those within the supply chain for their work in getting the agreement to this point." says Mr Crisp.

### Millions of livestock migrate from west to east

Since 2009, lambs transported west to east Australia have averaged 18,887 head a month. From the start of 2020 up to May 2021, an average of 75,921 lambs were transported a month. This was an increase of 57,000 on average, or 75.1%.

In similar instances to the sheep flock migration, lambs transported experienced a sharp rise prior to, and following the drought-breaking rain around March 2020. When the WA spring flush hit the market, lambs again experienced a sharp rise. This was due to WA producers looking to capitalise on strong market conditions in the eastern states and make better returns on investment rather than selling to the historically softer WA market.

Sheep supply from west to east in 2020 operated parallel with lambs. In May 2020 more sheep than lambs were transported east. In this month there were 35,395 more sheep sent eastward than lambs, totalling 121,792 head for the month.

It is evident that eastern demand for sheep during the early stages of the drought-breaking rain was insatiable. Following the widespread rain from March to June 2020, 767,000 sheep and lambs were transported from the west to east, averaging 192,000 head a month, well above the traditional average since 2009 of 27,459 sheep and lambs per month.

### New AHA sheep vet

Sheep and wool producers in New South Wales now have access to a new on the ground resource to help them implement practical and effective biosecurity measures on their farms, following the appointment of a second specialist extension resource at Animal Health Australia (AHA).

Dr Sophie Hemley joins AHA from a career as a District Veterinarian with the NSW Local Land Service (LLS), most recently with the Riverina LLS based in Griffith.

Dr Hemley brings to AHA a wealth of knowledge of the sheep industry in NSW, having grown up on a mixed wool and cropping property near Griffith before studying her veterinary degree at Charles Sturt University in Wagga Wagga. She is currently based at Ivanhoe in the state's west.

The appointment of Dr Hemley is the second under the National Sheep Industry Biosecurity Strategy 2019-2024 (NSIBS), which was developed by Sheep Producers Australia (SPA) and WoolProducers Australia (WoolProducers) to secure the future of the sheep and wool industries.

"We're here to help and encourage producers to take ownership of their on-farm biosecurity practices so that they can protect their farms against diseases, pests and weeds, ultimately boosting their productivity and profitability," Dr Hemley explained.

Dr Hemley joins Dr Emily Buddle, based in South Australia, as part of the AHA team focused on the delivery of NSIBS extension activities, which commenced their rollout in April 2020.

While both Dr Hemley and Dr Buddle will be building local networks and working with industry, producers and their supply chains within their respective states, they will also be working together to support national actions under the NSIBS banner. Find out more via [www.animalhealthaustralia.com.au/nsibs](http://www.animalhealthaustralia.com.au/nsibs).



# Schools on show

### Cowra NSW Dorset Championships

Bimbadeen stud from St Lawrence's Primary School, Coonabarabran; The Riverina Anglican College, Wagga Wagga's College Park stud; Loclani stud, Red Bend College, Forbes; and Tamworth High School Poll Dorset stud, all competed at the NSW Dorset Championships at Cowra in June.

#### Schools Awards

1 ram up to 2cm wool under 1.5 years: Bimbadeen Park

1 ewe up to 2cm wool under 1.5 years: Loclani

Paris ram up to 2cm wool under 1.5 years: Bimbadeen Park

Pair ewes up to 2cm wool under 1.5 years: College Park



### Holbrook Show

Finley High School attended the Holbrook Show with their Poll Dorset stud and won Supreme Sheep of the Show with their ewe Roxy, exhibited by Caitlin Griffiths. They also won Champion Ram, Ewe and group in the Poll Dorset Section.



### Gunnedah Show

The Gunnedah High School show team attended the Showground and school during their holidays to help set up and get ready for the Gunnedah Show. They came away with the following Poll Dorset breed awards; Champion & Reserve Champion Ram Lamb, Ewe Lamb and Ewe. Grand Champion Ewe of the Show and Supreme Exhibit.



### Northern Schools Prime Lamb Competition

Peel High School won the medium weight class with their pen of Poll Dorset lambs, while Tamworth High School won the heavy weight lambs class, and going on to win overall Champion pen and Champion Lamb of the show, with their pen of seven to eight month old Poll Dorset cross lambs from Abelene Park, Woolomin.





# New APDA Youth Coordinator

*I'm Charlotte Close and I have taken over the role of the APDA Youth Coordinator. Firstly I'd like to thank Amanda Watkins for all she has done in the role and hopefully I can keep up standards.*


For those who don't know me I manage Closeup Poll Dorset Stud with my family based in Finley NSW. Our stud has been operating for 32 years, and I have been involved my whole life. I have a passion for Youth in Agriculture and in particular the Poll Dorset industry which I have been so lucky to be apart of over my many years experience in the sheep industry.

I'm 26 years old and currently work as a Ruminant Sales Representative for a company called Alltech Lienert, who are focussed on supplements and nutrition for ruminants. I studied a Bachelor of Agriculture Business Management at Charles Sturt University prior to my employment.

In my time being involved in the Poll Dorset industry, my family and I have had successes we are very proud of at major and country shows around Australia. I have also been given opportunities to judge both sheep and youth competitions around the areas as well as opportunities to judge online sheep competitions. I have had the privilege of sharing my knowledge to young sheep producers in being apart of youth days and working with schools.




**If you have any youth yarns you'd like to spin with me please contact me at [youth@polldorset.com.au](mailto:youth@polldorset.com.au).**



# RAM SALE

On property at Wongarbon | Inspections from 11am  
Sale to commence at 2pm | Lunch provided



**Tuesday  
7th Sep 2021**



**140  
PERFORMANCE  
RAMS**

Alistair 0427 878 221  
Angus 0428 878 221

John Lindsay 0439 844 498  
Hugh Edwards 0457 730 703  
Matt Weber 0418 639 234  
Shaun McHugh 0417 487 914

Catalogues available via [angus.kelly@bigpond.com](mailto:angus.kelly@bigpond.com) or on our Facebook Page: Marocara Dorsets



# Young Poll Dorset breeders shine at the 2021 SA Sheep Expo

The Adelaide Showgrounds welcomed close to 100 young sheep enthusiasts in April 2021 for the fifth annual SA Sheep Expo. The SA Sheep Expo is all about bringing together young people with an interest in sheep to discuss and learn about the skills and technologies now available to run successful and sustainable stud and commercial enterprises, and provide exposure to the career opportunities on offer and the pathways in which young people can take to attain a profession in the industry. Amongst the participants at the 2021 event were a number of young Poll Dorset breeders. Congratulations to Emi Hughes from Bernalta Stud, Sampson Flat SA who was awarded the second overall Senior Handler. Emi was also awarded third place in the Junior Judging (Senior Class) competition alongside Lachlan Grossman from Koonawarra Stud, Angaston SA who came in first place with his brother Stefan being awarded second place. Other Young Poll Dorset breeders in action included Isaac and Zoe Lush from Fairview Hills, Inman Valley SA and Elsie Johnson from Select Poll Dorsets, Peake. The Adelaide Poll Dorset Region once again sponsored ten participants to attend the SA Sheep Expo. Hear what some of the scholarship recipients have to say about their experience.

### Name

April Holmes

### Where are you from? (School or organisation)

Currently studying year 12 through Trinity College

### Why did you apply for the APDA Adelaide region Sheep Expo scholarship?

I applied with a hope to be able to attend the expo and not only gain practical experience such as handling, but to also become more educated in terms of the different sectors of the industry.

### Before going to the expo, what was one thing you were hoping to gain from attending?

I was hoping to gain more experience in handling sheep, while also hoping to make connections with like-minded people while staying at the grounds and competing.

### What are three things you learnt from the expo?

I learnt how diverse and variant the Sheep Industry is including the different sectors and how intricate the processes are of both raising sheep and selling what is attained. I highly valued The Livestock Marketing interactive session provided by Nutrien Ag Solutions along with the presentation on Artificial Insemination taken by Dr Ken Watson.

### Name

Lachlan Hillier

### Where are you from? (School or organisation)

Birdwood high school

### Why did you apply for the APDA Adelaide region Sheep Expo scholarship?

I was interested in going to the SA Sheep Expo for the first time and this scholarship gave me the opportunity to go.

### Before going to the expo, what was one thing you were hoping to gain from attending?

Being my first time, I was hoping to learn a lot about the sheep industry.

### What are three things you learnt from the expo?

Soil health, ewe health during lambing and wool off farm

### Name

Jessica Cousins

### Where are you from? (School or organisation)

Burra Community School

### Why did you apply for the APDA Adelaide region Sheep Expo scholarship?

I enjoy working in the industry and can see myself having a career in it. Therefore, I entered the SA Sheep Expo out of interest and to further my knowledge.

### Before going to the expo, what was one thing you were hoping to gain from attending?

I wanted to learn the process and skills that goes into presenting a show sheep

### What are three things you learnt from the expo?

While attending the sheep expo I developed my show sheep holding skills. I also learnt about pasture growth and the soil types that are necessary for the growth of different cereal crop. I learnt about the process of AI and the genetic identification of sheep which was very cool.



Lachlan and Stefan Grossman from Koonawarra stud and Emi Hughes from Bernalta Stud.







Flock 1143

Est. 1966

## Annual Sale - Thursday 14th October, 1pm

### \* Exciting young sires include \*



**110/20 t** – A long and meaty son of D 33

0.65 +12.5 +19.2 -0.5 +2.9 TCP 161 LEQ 156

**405/20** – A huge, long and correct son of D 400

0.47 +12.1 +19.1 -0.4 +3.6 TCP 155 LEQ 143



**822/20 t** – Very correct and standout son of A 679

0.15 +10.2 +15.2 +0.5 +4.0 TCP 145 LEQ 140

**836/20 t** – A long and meaty son of BD 180

0.40 +10.5 +17.1 -0.5 +3.4 TCP 151 LEQ 140



**74/20 t** – A very meaty and correct son of OW 425

0.26 +11.2 +17.2 -0.3 +3.5 TCP 159 LEQ 153

**307/20 t** – A very stylish, standout son of J 14

0.39 +11.8 +18.4 -0.5 +3.2 TCP 148 LEQ 138



**59/20 t** – A clean, and stylish son of L 625 (+0.5 IMF)

0.39 +10.0 +15.5 +0.1 +3.1 TCP 155 LEQ 161

**211/20 t** – A smooth, elite performed son of F 494

0.57 +11.3 +19.1 -0.3 +3.1 TCP 160 LEQ 157

\* Sale offering includes 40 elite 2020 drop ewes \*

AuctionsPlus™



Ted Beattie  
0409 189 116

Please enquire  
for catalogue

Simon Beattie  
0429 330 562

Email: [derrynock@outlook.com](mailto:derrynock@outlook.com) Web: [www.derrynock.com.au](http://www.derrynock.com.au)

Brucellosis accredited - Footrot free - MN3v



COMMERCIAL FOCUS - COMMERCIAL RESULTS



# PD Members lead the way

*Courtesy of Kate McLachlan*

Poll Dorset breeders advance their industry advocacy and media skills with Sheep Producers Australia scholarships

Earlier this year, a group of fourteen sheep industry supply chain participants took part in the Livestock Leaders Advocacy, Communication and Media program sponsored by Sheep Producers Australia and delivered by The Livestock Collective. Poll Dorset breeders Charlotte Close from Closeup Poll Dorset Stud, Finley NSW and Kate McLachlan from Newbold Studs, Gawler River SA were two of the lucky scholarship recipients.



"As stud breeders, we are increasingly required to be active on social media to promote our studs and are often called upon by journalists to comment on topical issues – or even just to give comments following ram sales. Being able to confidently respond and engage not only benefits our own studs but also the Poll Dorset breed as a whole," says Kate.

Livestock Leaders is a professional development program which aims to build the capacity of current supply chain champions to be leaders, advocates and influencers. The Livestock Collective identify leaders along the supply chain and empower them to speak on their industries behalf for years to come. The program fosters leadership, builds skills in shared values communication, social media and media engagements, creates a support network of like-minded individuals and empowers participants to be champions of the sheep industry.

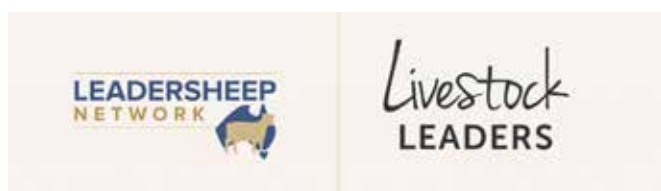
The workshop attended by Charlotte and Kate was delivered completely online and included topics:

- How to share your story using values-based communications
- Different communication styles
- How to build your own brand on social media
- Media Interview and presentation skills
- How to engage and speak to the media
- Case studies

This program is just one example of the professional development opportunities available to producers through Sheep Producers Australia "Leadership Network". Other programs include governance skills, negotiation and leadership.

For more details, see:

<https://sheepproducers.com.au/leadership/>  
<https://livestockleaders.com.au/>



## WHAT IS THE LEADERSHIP NETWORK?

The Sheep Producers Australia Leadership Network connects sheep producers and people working in the industry who share the goal of driving industry growth and success.

It's a national network open to everyone in the sheep industry. It's your opportunity to develop, connect and contribute.

The Leadership Network provides opportunities to exchange ideas, share knowledge and contribute to the development of industry initiatives.

## WHY IS THE LEADERSHIP NETWORK IMPORTANT?

The purpose of the Leadership Network is to accelerate the development of current and future leaders to ensure strong leadership for the long-term success of the Australian sheep industry.

Sheep Producers Australia is proud to coordinate the Leadership Network. The organisation recognises the importance of confident and competent people in driving our industry forward and values the investment in BUILDING FUTURE LEADERS and POSITIONING THE INDUSTRY FOR A STRONG FUTURE.

## VALUE FOR INDUSTRY

The Leadership Network will:

- Ensure strong leadership for the long-term success of the Australian sheep industry by accelerating the development of current and future leaders.
- Develop a cohort of forward-thinking strategic leaders who can contribute to the industry and sheep production into the future.
- Ensure effective succession planning and strategic contributions on boards and committees in the sheep industry and communities as a whole.

## VALUE FOR INDIVIDUALS – WHAT'S IN IT FOR ME?

Whether you are an up-and-coming leader or already an experienced industry influencer, the Leadership Network offers support to help you grow in personal and professional lives.

- Developing leadership skills and experience
- Making connections with other industry leaders
- Providing opportunities for you to contribute and be involved

## WHO IS INVOLVED?

The Leadership Network is a national network open to everyone in the sheep industry – every age, every stage.

- Anyone keen to learn more about the sheep industry
- Anyone interested in being involved in industry leadership
- Alumni of SPA leadership programs
- People who would like to take part in future programs or continue their life-long learning journey



# Early results in on Gundagai's world-first lamb IMF grid

*Courtesy of Terry Sim, Sheep Central*

A LAMB producer has achieved a 43c/kg carcass weight premium for a high intramuscular fat consignment in the first results from the Gundagai Meat Processors world-first IMF grid offering.

In mid-May this year, GMP offered its world-first lamb grid paying producers on lean meat yield, weight and intramuscular fat, with feedback on animal health at an individual carcass level.

Gundagai Lamb's Late Season Lamb Grid offered producers an average price of \$7.50 per kilogram on a hot standard carcass weight/lean meat yield basis for May, June and July delivery. the company is now booking lambs for late July/ mid August delivery under a new price grid.

On the grid, an intramuscular fat or marbling bonus of 50 cents a kilogram was paid for lambs with an IMF of 5 percent or higher. It was aimed at Meat Standards Australia-accredited consignments of 150 lambs or more, of all breeds, although Merino, Dohne and SAMM lambs by application only.

In the first results, from mainly old lamb consignments, GMP chief executive officer Will Barton said that in the best mob of lambs sent to GMP on the grid, 85 percent of the consignment had an IMF higher than 5 percent.

"Which means that producers got the bonus 85pc of the time, which over the consignment amounted to 43c/kg carcass weight.

On average, 30pc of most consignments were over 5pc in IMF and the worst producer achieved this for 3pc of their lambs."

	How many lambs got the IMF Bonus?	Overall Value of Bonus
Best Producer	85%	\$0.43 per kg
Average Producer	30%	\$0.15 per kg
Worst Producer	3%	\$0.01 per kg

The average producer received the bonus for 30pc of lambs consigned, which equated to an additional 15c/kg on the grid pricing overall. Mr Barton is now looking forward to seeing what happens to IMF performance in Spring, from suckers or new season lambs.

He said GMP's first IMF grid had allowed for a heavier lamb, and a new grid has been released for late July to mid-August matching prices to fat scores (GR measurements), lean meat yield categories and carcass weight.

Weeks 30-32 26 Jul to 13 Aug 21		LEAN MEAT YIELD (%)				
		<50	50 - 53	53 - 57	57 - 60	> 60
HSCW (kg)	<18	\$6.50	\$6.80	\$7.20	\$7.45	\$6.45
	18 - 24	\$7.50	\$7.80	\$8.20	\$8.45	\$7.45
	24 - 32	\$7.80	\$8.00	\$8.30	\$8.50	\$7.50
	32 - 34	\$7.65	\$7.85	\$8.05	\$8.20	\$7.20
	>34	\$6.15	\$6.35	\$6.55	\$6.70	\$5.70

All lambs with IMF greater than 5.0% receive \$0.50 premium per kg

## GlanEry® 7in1 B12

zoetis

The  
**NEW GOLD STANDARD**  
of Sheep Vaccines



**ERYSIPELAS ARTHRITIS**

+

**CHEESY GLAND (CLA)**

+

**5 CLOSTRIDIAL DISEASES**

&

**BOOSTED WITH VITAMIN B12**

**ALL IN A 1ML DOSE**

- ✓ Stops **Lame Lambs\***
- ✓ Protects your **Wool Cut**
- ✓ Protects **Meat Quality**
- ✓ More **Lambs to Sell**
- ✓ **Easy** to use & **Convenient**

\*caused by *Erysipelothrix rhusiopathiae*

Zoetis Australia Pty Ltd. ABN 94 156 476 425. Level 6, 5 Rider Boulevard, Rhodes NSW 2138. © 2021 Zoetis Inc. All rights reserved. March 2021 ZL1340.



"The higher IMF was associated, not surprisingly, with heavier fatter lambs."

Mr Barton said the factors that contributed to turning off a high IMF lamb included nutrition, genetics rather than breed, and age, and he doesn't expect that any specific nutritional regimen or breed "is the king" for producing high IMF.

"I think it will always be a combination of producers using their smarts and all of those things in combination and for some it might be one of them more than others.

"The ultimate I guess is to turn something off grass with a high IMF."

The high IMF consignment came off a grazing crop, but some lambs off feedlots had also performed well. The top five consignments to date did not all have a common breed or finishing backgrounds, Mr Barton said.

"What it demonstrated to us, and it's what the science has been telling us for some time, is that there are lots of ways to achieve IMF.

### Producers need information linking fat score to lean meat yield

	LEAN MEAT YIELD (%)				
	<50	50 – 53	53 – 57	57 – 60	> 60
Most Likely Fat Score	5	5-4	4-3	3-2	1

He said the new simplified grid for producers reflected more information on which fat scores lined up with which lean meat yield categories. The above table shows how DEXA lean meat yields are lining up with fat scores from the old fat palpation system. Mr Barton said it is important to understand that these are not exact matches, but rather the most common correlations being seen.

"We've provided that table (above) in the grid documentation to say this is the most likely fat score for each of these lean meat yield categories.

"It's a not perfect correlation, there is a lot of overlap, but people needed that to be able to make decisions," he said.

"What we've realised is that the person that consigned us lambs with 3pc of (+5pc) IMF is unlikely to consign to us again, but the person with 85pc is unlikely to go anywhere else, because they got 43c/kg extra.

"So what it demonstrates to us is that if people are willing to give it a go in terms of trying out and getting the feedback to understand where they sit, they might find that they've got a home here that gives them absolutely the best value to reward them for their IMF," Mr Barton said.

"They might find that they've got the opportunity to improve if they are in the middle of the road, and keep coming here, or they might find that they are on the wrong side of it and they have no intention of changing that.

"That's what it is about for us, to attract those to us who believe what we believe about the future of it, but what a great result for those people with high IMF, that all of a sudden they are getting really strong pricing for their article," he said.

"We can build a brand around that."

Mr Barton said producers will want to know if and how they can repeat good IMF results, including whether it was due to. GMP is also interested in that and he said after 12 months and after surveying the top producers, the business will be in a position to give some insights.

"We are just not far enough into it."

Mr Barton is looking forward to seeing what impact seasonality has on IMF in consignments in the next 12 months.

## Recommendation for IMF to be a new trait for lamb grading.

### Courtesy of Sheep Producers Australia

The Sheep Producers Australia Product Integrity Committee had its meeting on 17 May to discuss a wide range of issues ranging from chemical intramuscular fat (IMF%) grading language, increasing the uptake of the eNVD, and the exploration of a national electronic tag tender for the sheep industry.

### Chemical Intramuscular Fat Standards

The Committee recommended their support for a proposal seeking to establish the IMF% trait as a trading/grading language as the reference standard for lamb carcase grading and trading language. This will provide a method for the standardised calibration, accreditation and auditing of emerging technologies that aim to predict chemical IMF% in Australian lamb and sheepmeat. IMF% is the measure of the chemical fat percentage in the loin muscle of lamb, where the visible component is known as marbling. Research shows that IMF% has a very strong correlation with eating quality.

Currently, lamb carcase grading is based only on carcase weight and Grade Rule (GR) tissue depth or fat score, with no method of directly or indirectly identifying or segregating lamb carcasses based on eating quality. The beef industry uses the Meat Standards Australia (MSA) beef grading scheme to grade individual cuts within the carcasses. The MSA grading scheme uses a range of variables known to influence eating quality, including marbling score. For the lamb industry to implement a similar MSA model, commercially available technologies that predict chemical IMF% at processing linespeed are required. Therefore, to further progress the production and delivery of commercial solutions, the IMF% needs to be agreed to as a new trait for the lamb and sheepmeat grading language.

SPA would like to see the lamb industry measuring lean meat yield (LMY) as calculated by DEXA and IMF% measured at chain speed during processing so consumers can be guaranteed a quality product; producers can adjust their ram selection for a balance between yield and eating quality in the lambs they produce; and processors can optimise boning, target specific markets and potentially reward producers.



**FRIDAY  
1ST OCT**



Valley  Vista

POLL DORSET STUD

# ANNUAL ON- PROPERTY SALE

45 YEARS OF BREEDING SHEEP WITH HIGH  
GROWTH RATE, LENGTH AND MUSCLE.

- 1PM START
- 150 RAMS ON OFFER
- INTERFACED WITH AUCTION PLUS

☎ ANDREW: 0419 208 272  
JOE: 0429 220 492

📍 VALLEY VISTA, COOLAC NSW 2727

✉ VALLEYVISYA@VALLEYVISTA.COM.AU

📘 /VALLEYVISTAPD

🌐 WWW.VALLEYVISTA.COM.AU





## Lambs on hand up 35% as flock rebuild continues

*Courtesy of Meat and Livestock Australia & Australian Wool Innovation*

Meat and Livestock Australia has results from the June MLA/AWI Sheepmeat and Wool Survey. The survey had over 1,700 respondents from around the country.

The survey results reinforced that the Australian sheep flock is in a rebuild phase, with both the number of ewes and lambs on hand up on 2020 levels. As of 30 June 2021, there were 41.6 million head of breeding ewes – up 1 per cent, or 400,000, on 2020 levels. On a regional basis, all states experienced growth in ewe numbers except SA and Victoria.

There was also a significant jump in lamb numbers on hand, up 35 per cent to 19.7 million head. This increase in lamb numbers

is expected to flow onto higher lamb sales, which are forecast to hit 7.2 million head over the next four months, a rise of 33 per cent on 2020 levels.

Impressively, the increase in lambs on hand has been achieved through higher marking rates, but with less ewes joined – in June 2021, 1 per cent more lambs were marked from 6 per cent less ewes joined. This was possible as marking rates increased 6 per cent to 101 per cent across all breeds.

Further reinforcing the strength of the rebuild are the statistics about producer intentions. The survey found that 92 per cent of producers nationally are going to either increase or maintain their flocks over the next 12 months.

These numbers demonstrate that the national flock rebuild is underway and expected to continue into next year. The increase of ewes on hand is a result of producers retaining more breeding stock to rebuild the herd. The lambs on hand increased on the back of favourable seasonal conditions, which helped increase marking rates, especially due to pregnant ewe nutrition. SA was the only state that had ewe numbers on hand and rebuild intentions drop, partly due to drier conditions in the state.

### Expected lamb sales in the next four months – by State

**kynetec**  
INCORPORATING  
**CLARK**

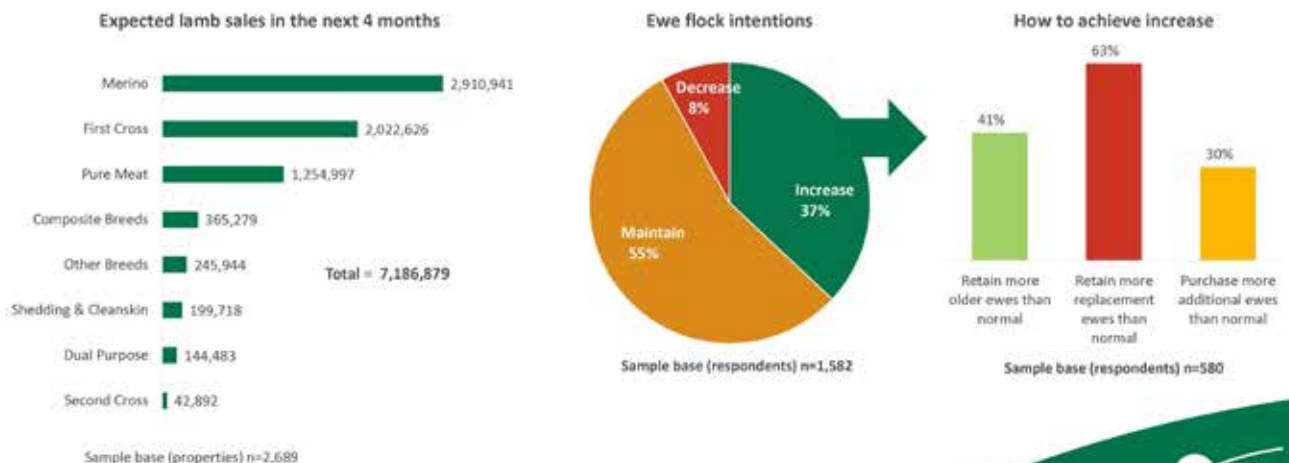


### Expected lamb sales in the next 4 months - Australia

**kynetec**  
INCORPORATING  
**CLARK**

A total number of **7.2 million lambs** are expected to be sold in the next four months (1 July 2021 to 31 October 2021), approximately 37% of the total number of lambs on hand (19.7 million). Of these: Merino, First Cross and Pure Meat breeds are expected to account for 40%, 28% and 17% of lamb sales respectively.

These results are consistent with producer ewe flock intentions for the next 12 months and method of achievement, with **37%** of producers are looking to increase their ewe flocks, largely through retaining more replacement ewes than normal (63%) or retaining more older ewes (41%).







# GLENORE

## POLL DORSET

### STUD



## 11<sup>th</sup> Annual On Property & Online Ram Sale

Wednesday 6<sup>th</sup> October, 2021  
at 1:00pm

14 Specially Selected  
80 Flock Rams

Sale rams available  
for inspection



**GLENORE 200-20**

LW	DEPTH	WIDTH	FAT
123.5	103	54	11

Peter and Gillian Cain 'Glenore'

582 Carisbrook-Eddington Road, Carisbrook, Victoria, 3464

Mobile - 0407 843 711 | Email - [petegillcain@bigpond.com](mailto:petegillcain@bigpond.com)

HF RICHARDSON

Nutrien





# Rain grows flock faster

*Courtesy of Meat and Livestock Australia*

Favourable seasonal conditions for the first half of 2021 coupled with a positive outlook will result in a faster national flock rebuild, according to Meat & Livestock Australia's (MLA) 2021 sheep industry projections half year update, released in June.

Australia's sheep flock continues to undergo a significant rebuilding phase and is predicted to grow by 6.3% to 68.1 million head, this follows the flock falling to its lowest level on record in 2020, at 64 million head, after years of drought.

MLA Market information manager, Stephen Bignell, said the speed of the rebuild was also a result of lower than previously expected sheep and lamb slaughter in 2021.

"Lower slaughter numbers for sheep and lamb, which MLA are now forecasting to be 6.1 million head and 20.3 million head respectively, are being driven by continued good weather in key sheep producing regions. These strong seasonal conditions are encouraging producers to retain more ewes and ewe lambs for breeding purposes," Mr Bignell said.

"Despite being revised down from the February projections, lamb slaughter is still expected to be above levels from last year, when 20 million head were slaughtered.

"In 2020, lamb processing capacity in Victoria was impacted by COVID-19 social distancing measures in the latter half on the year. Therefore, it is expected that lamb slaughter could accelerate in the second half of 2021 and exceed 2020 levels."

Mr Bignell also said improved conditions in Western Australia are likely to impact producer intentions in the state.

"It is likely that the wet autumn and good outlook for winter will cease any flock liquidation in the state, stopping the flow of sheep to east that lead to 2 million head being trucked across the Nullarbor in 2020," Mr Bignell said.

"The favourable conditions in WA will encourage producers to rebuild their flocks. A recent MLA benchmarking report found that mixed sheep and cropping farms in WA are the most profitable in the world, reinforcing the rebuild mentality in the state."

Mr Bignell said average national lamb carcase weights will continue to be underpinned by improved seasonal conditions across key sheep regions and relatively high prices in the first quarter of 2021 that are providing producers with an incentive to add additional kilos to animals.

"Better conditioned lambs will see average national lamb carcase weights for 2021 lift marginally to 24.4kg, up 0.4kg/head on 2020 levels. MLA has not predicted significantly increased weights in 2021, given 2020 was also a year with abundant feed that assisted good lamb growth.

"Continued feed availability is underpinning average sheep carcase weights which are expected to remain in line with 2020 weights at 25.8kg/head. Greater investments into sheep lot and containment feeding during the 2018-19 drought supported carcase weights in periods of pasture shortfalls."

Saleyard prices in 2021 are expected to remain high, though slightly lower than the records set in 2020 and 2019, indicative of a flock rebuild that is maturing.

As the predictions suggest, the sheep flock is in good shape to rebuild and grow, which will help Australia continue its position as a global export leader now and into the future.



## KEY POINTS

- The national flock is rebuilding in 2021 far faster than initially expected.
- Lamb slaughter to accelerate in the second half of 2021.
- Record lamb production forecast in 2023.



## KEY 2021 NUMBERS



**Lamb slaughter:**  
**20.3** million head



**Lamb production:**  
**495,000** tonnes cwt



**Lamb exports:**  
**280,000** tonnes swt



**Sheep slaughter:**  
**6.1** million head

\* Graphic illustrates year-on-year change



# Poll Dorset lambs average 11% price increase YOY since 2016

*Courtesy of Michael McManus, AuctionsPlus*

Poll Dorset listings on AuctionsPlus have fluctuated in correspondence with seasonal conditions since 2016. Listings have increased year on year from 2016 to peak in 2019 - at the height of the drought when destocking was prevalent throughout the eastern states. Listings peaked at 315,519 head, with numbers falling by 11% in 2020 due to improved seasonal conditions and a shift to flock rebuilding.

Numbers for the first half of 2021 are currently well down on previous years, but with spring lambs yet to hit the market and favourable seasonal conditions likely to result in abundant lamb numbers on the ground, large online throughput will be anticipated.

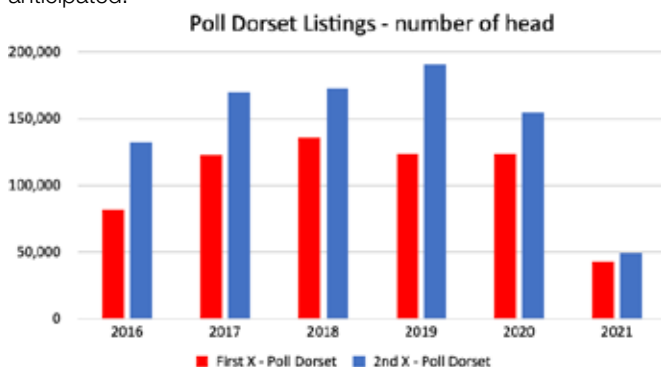


Figure 1: Poll Dorset Listings on AuctionsPlus 2016-2021

Listing trends from 2016 to 2021 are indicative of seasonal conditions. In 2019, a substantial rise in second cross Poll Dorset listings occurred as producers prioritised selling their second cross articles when destocking - as witnessed in the difference between second and first cross listings in 2019

Looking to 2020 with vastly improved seasonal conditions, Poll Dorset listings on AuctionsPlus have declined by 11% from 2019. Second cross listings decreased in volume due to a favourable shift in seasonal conditions, giving producers the ability to rebuild flocks, and in doing so retain numbers.

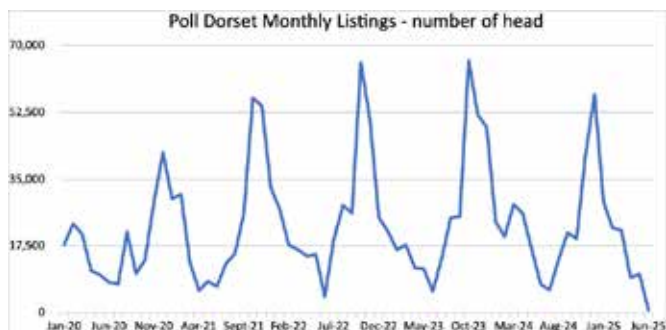


Figure 2: Poll Dorset Seasonal Listings

Diving further into throughput trends to assess seasonal influenced listings, a considerably lower Spring 2020 spike in listings highlighted the action of producers to retain stock and begin to rebuild flock numbers. Interestingly, another highlight in figure 2 is April 2020, when an uncharacteristic short spike in listings was witnessed, largely attributed to the closure of saleyards with the initial nationwide lockdown at the start of the COVID-19 outbreak.

With Spring 2020 marking the shift to a rebuild phase, a rise in numbers is likely this year, like in 2017, as conditions continue to improve, and producers start to sell additional numbers. Furthermore, the ongoing robust prices received for first and second cross mixed sex lambs and wethers is likely to entice producers to capitalise on the strong market.

Year	First X - Mixed Sex Lambs			Second X - Mixed Sex Lambs		
	Offered	Average	YOY Change	Offered	Average	YOY Change
2016	81,121	\$99	-	128,323	\$105	-
2017	117,328	\$109	9%	166,140	\$117	11%
2018	133,688	\$109	0%	170,353	\$118	1%
2019	116,828	\$130	20%	188,055	\$139	17%
2020	114,223	\$152	17%	145,896	\$163	17%
2021	35,915	\$163	7%	46,077	\$172	6%

Figure 3: Mixed Sex Lamb Average Prices

Prices for first and second cross mixed sex lambs have risen steady year-on-year, with robust domestic and export demand underpinning prices. First and second cross Poll Dorset mixed sex lambs have increased by an average of 11% annually since 2016. For the first half of 2021, first and second cross lambs have averaged \$163/head and \$172/head, respectively. Second cross mixed sex lambs have traded at a premium to first cross lambs on AuctionsPlus since 2016.

Year	First X - Wether Lambs			Second X - Wether Lambs		
	Offered	Average	YOY Change	Offered	Average	YOY Change
2016	1,020	\$90	-	2,147	\$94	-
2017	2,085	\$105	17%	2,778	\$123	31%
2018	610	\$103	-2%	1,104	\$121	-2%
2019	3,679	\$153	49%	1,703	\$133	10%
2020	1,925	\$156	2%	3,779	\$170	28%
2021	2,458	\$167	7%	455	\$153	-10%

Figure 4: Wether Lamb Average Prices

Wether lambs have also seen considerable price increases year on year. First cross wether lambs averaged a 15% increase annually, while second cross wether lambs averaged 11%. Premiums for wether lambs have fluctuated, with second cross lambs fetching a higher average price in four out of the six years, with first cross wether lambs registering dearer trends in 2019 and again so far in 2021. The premium for first cross wether lambs can be attributed to the strong wool price, with the Eastern Market Indicator (EMI) topping at 2,000c/kg greasy in February 2019.

Clearance Rates	2016	2017	2018	2019	2020	2021
Mixed Sexes	91%	92%	85%	86%	93%	95%
Wether Lambs	100%	75%	100%	94%	97%	87%
Overall	90%	91%	84%	86%	90%	89%

Figure 5: Poll Dorset Clearance Rates

Clearance rates overall reflect fluctuations in supply and seasonal conditions, with lower clearance achieved during dry periods when listings are higher, and producers look to destock. As represented in figure 5, demand for Poll Dorset listings has been robust, with mixed sex lambs averaging 90%, wether lambs averaging 92% and the overall clearance for Poll Dorset listings averaging 88% since 2016. Poll Dorset clearance levels are much higher than the AuctionsPlus yearly sheep clearance average of 75% for the same period - indicating firm demand for Poll Dorset article and ongoing buyer confidence in the breed.

Listing and purchases are evenly weighted across the states from 2016 to 2021. NSW makes up on average 66% of Poll Dorset listings and 65% of purchases, followed by Victoria which accounts for 24% of both listings and purchases.

Since 2016 the Poll Dorset market has experienced strong price returns year on year, with the category average increasing steadily annually. As positive seasonal conditions continue to facilitate a growing national flock, the upcoming Spring lamb season will provide valuable insight into rebuilding progression and trading intentions.



# New season lambs leaping onto the box in 2021

*Courtesy of Michael McManus, AuctionsPlus*

As the days become longer and warmer, the welcomed spring season is almost upon us, and with it an influx of new season store lambs hitting the market. The coming weeks for new season lambs should prove to be very closely watched, given the strong position and outlook of the Australian lamb market, and sustained flock rebuilding over the past 18-months.

As of the end of July 2021, AuctionsPlus has already seen strong numbers of new season lambs offered. Record yearly throughput is forecast for the coming months - on track to rise above the highs of 2020.

In reviewing AuctionsPlus offerings back to 2016, new season lamb numbers for 2021 are currently at the highest point on record as at the end of July – as displayed in figure 1. So far this season, AuctionsPlus has seen just over 50,000 head offered - 3,000 head above the next highest season, in 2018.

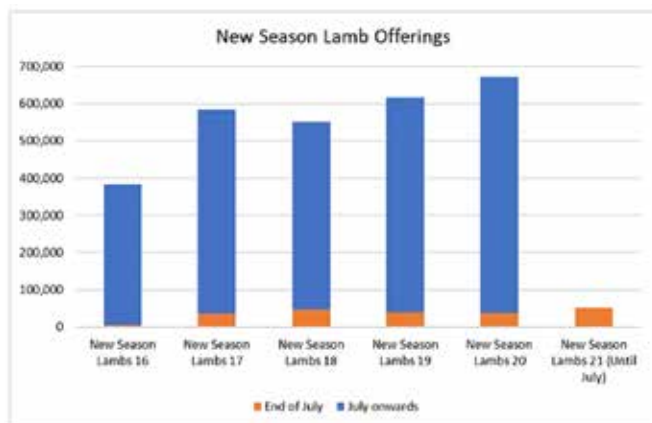


Figure 1: New Season Lamb Yearly Throughput

Interestingly, 2020 registered the highest yearly throughput online for new season lambs. This result appeared to be a somewhat surprising statistic, given the low national flock numbers and the demand to restock throughout the period. However, the lure of the higher prices and desire for cash flow following the drought year may have been a larger influencing factor in 2020.

As seen below in table 1, NSW, typically the highest throughput state, had considerably lower listings for 2020, which reinforces the states shift towards restocking. Both Victoria and South Australia recorded an increase of 81per cent and 98per cent respectively on their 2020 throughput from the previous year - taking advantage of the strong market conditions and tapping into the unrelenting demand from NSW restockers. NSW 2020 throughput remained the second largest throughput for the year, despite the state listing a much-reduced offering compared to the previous three years (19, 18, 17), highlighting the importance producers placed on retaining numbers.

Category	New South Wales	South Australia	Victoria	Queensland
New Season Lambs 16	204,409	100,321	66,343	4,784
New Season Lambs 17	331,074	124,365	106,418	11,496
New Season Lambs 18	357,755	77,746	96,289	10,841
New Season Lambs 19	368,669	112,116	114,141	6,519
New Season Lambs 20	215,108	222,222	206,367	8,840
New Season Lambs 21	31,956	10,595	3,348	5,034

Table 1: New Season Lamb Throughput by State

Sheep prices across the board have seen a steady increase since 2016, nudging higher each year with 2021 shaping up to be a consolidation year - with results so far showing certain categories tapering off, while others improve on an already record 2020. As of the end of July, prices have fallen slightly for shedding breed lambs and Merino wether lambs, while crossbred lambs and first cross ewe lambs have strengthened on last year's prices.

Category	Crossbred Lambs	First X Ewe Lambs	Shedding Breed Lambs	Merino Wether Lambs	All Categories
New Season Lambs 16	\$105	\$170	\$123	-	\$117
New Season Lambs 17	\$116	\$179	\$91	\$104	\$118
New Season Lambs 18	\$170	\$188	\$102	\$75	\$118
New Season Lambs 19	\$183	\$186	\$142	\$113	\$163
New Season Lambs 20	\$147	\$241	\$297	\$142	\$174
New Season Lambs 21	\$180	\$235	\$222	\$126	\$178
1 Year Average	\$128	\$188	\$168	\$112	\$168

Table 2: Average (Sheep) Prices for New Season Lamb Categories

Reviewing the sex makeup of historical listings since 2016, the marketing of mixed sex lines has constituted 71.3per cent of the total offering of new season lambs, followed by wethers at 14.4per cent and ewes at 14.3per cent. Interestingly, table 3 highlights the extent the rebuilding intentions had on producers in 2020 to sell new season ewes early - taking advantage of demand and high prices. A total of 189,116 ewe lambs were offered on AuctionsPlus in 2020, comprising 28per cent of the total new season lamb offering.

Categories	Ewe	Mixed Sex	Wether
New Season Lambs 16	54,028	274,868	54,596
New Season Lambs 17	72,835	427,026	84,695
New Season Lambs 18	52,873	440,196	58,535
New Season Lambs 19	65,458	472,782	77,960
New Season Lambs 20	189,116	355,876	126,594
New Season Lambs 21	7,018	32,305	11,610
Total	441,329	2,003,053	413,990

Table 3: Sex Makeup of Listings (No of head)



Figure 2: Heat Map of Listings and Purchasing

Reviewing heat mapping of both listings and purchasing, figure 2 shows the west to north east movement of stock for new season lambs in 2020. Victoria and South Australia listed 64per cent of new season lambs, with 56per cent of the purchased offering secured by NSW buyers.

With a 95per cent clearance rate achieved for the already 50,000 head offered in 2021, new season lambs are again in high demand. Prices are competing and edging out last years record returns, underpinned by the seasonal conditions and robust lamb demand outlook.





# GOORAMMA

## POLL DORSET STUD

Supreme Breeding Quality since 1970

1:30PM FRIDAY 17TH SEPTEMBER  
150 HIGH QUALITY RAMS

ANNUAL  
RAM SALE-

VISIT OUR  
WEBSITE FOR  
CATALOGUE



AT TWELVE  
MONTHS

**GOORAMMA 74-2020**  
SIRE: GOORAMMA 682-18  
USED IN CARCASE TRIAL



**GOORAMMA 133-2020**  
SIRE: GOORAMMA 80-2018  
HALF BROTHER SOLD TO BRAZIL



AT TWELVE  
MONTHS

**GOORAMMA 23-2020**  
SIRE: GOORAMMA 404-18  
USED IN STUD



**GOORAMMA 670-2020**  
SIRE: DERRYNOK 12-18  
CARCASE + CLASS



AT TWELVE  
MONTHS

**GOORAMMA 495-2020**  
SIRE: GOORAMMA 'GURU'  
LAST SONS OF GURU



**GOORAMMA 109-2020**  
SIRE: GOORAMMA 80-2018  
T-BONE X MEAT MACHINE



Scan to join mailing list for hard copy  
of 2021 Gooramma Catalogue

 AuctionsPlus<sup>™</sup> INTERFACED

**WWW.GOORAMMA.COM.AU**  
**JAMES CORCORAN : 0438 647 333**

'GOORAMMA' BOOROWA NSW



# Hildden Poll Dorset Stud

620 Bannister Lane, Bannister NSW 2580  
Flock 1593

**Online Auctions Plus sale Tuesday 21st September 12pm.**  
Featuring sons of both supreme champion exhibit ewes at the  
NSW Dorset Championship Cowra 2018 & 2019.

**Open day Saturday 18th September.**  
Inspection available any time by appointment.  
Covid safe practices will apply.

**Annual on property sale Friday 5th November 2pm.**



**Hildden 110-19**

Senior Champion NSW Dorset  
Championship Cowra.  
Supreme exhibit Canberra Royal 2020.  
Semen available.



**Hildden 434-20**

Intermediate Champion ram NSW  
Dorset Championship Cowra.  
For sale online Auctions Plus Tuesday  
21st September 12pm.

*Enquiries Welcome - Brian & Lorraine Frost, "Hildden", Bannister, NSW 2580*  
**Tel (02) 4844 3134 James - Mobile: 0427 483 134**





# BRIGHT SIDE POLL DORSET STUD

## Offering 2 Rams at Australasian Dorset Championships (200017 & 200039):



**Bright Side-200017**

### **Bright Side-200017 (Pictured)**

Reserve Champion Ballarat Victorian Show. For sale Australasian Dorset Championships. 50% semen share retained. Sired by Armdale Park 180028.

### **Bright Side-200039**

3rd Shorn Ram Ballarat Victorian Show. For Sale Bendigo Australasian championships. See Facebook/Instagram for photos & videos. Sired by Bright Side 190008 (Sold to Blauvelt Stud).

## First online sale through **auctionsplus** Friday 22nd October:



**Bright Side-200027**

Offering 2 Stud Rams & Top End Flock Rams.

### **Bright Side-200027**

4th Shorn Ram Ballarat Victorian Show. Sired by Armdale Park 180028. Catalogued for auctionsplus online sale Friday 22nd October.

All stud rams are genomics tested, results are pending. OJD Vaccinated.

**Contact Elizabeth Wilkinson:**  
0477 110 081  
**Purnim, Victoria**





# Ram sales set for spring success

*Spring sales are now getting underway, with Poll Dorset rams going under the hammer across the country throughout the spring.*

For a second year sellers and buyers alike will be impacted by Covid-19 restrictions and border closures, but it is unlikely to dampen the demand for rams.

The integration of online platforms and promotion, along with implementation of by-appointment viewing is ensuring plenty of opportunity for both stud and commercial buyers to get a look at the rams prior to sale day.

Records fell across the board last season, with new records set for stud and flock ram averages.

Tattykeel, Black Springs, NSW, achieved a record stud ram average of \$8700, while a new record average was set for flock rams was achieved by Armdale Park, Marrar, NSW, at \$2218 for their on-property offering.

Of the 59 on-property auctions that provided results for the 2020 December journal, the sale average was \$1584, with 6009 rams sold.

This year's outcome is set to be just as strong according to industry, with the weather and market keeping confidence high.

Nutrien Ag Solutions NSW Livestock Manager John Settree said he expects the ram sales to go "extremely well".

"The sheep industry was affected number and quality wise in the drought so it is in a rebuild, and the lamb market at the moment in both export and trade is through \$10/kg, with record prices in the yard occurring week to week," he said.

"Everyone has some money now too, they are building up a cash supply so they can afford to buy better quality rams.

Mr Settree said while traditional Merino breeders were joining back to Merinos to build numbers right now, this would soon change, and first-cross ewes would be in hot demand this season, making up to \$400.

"Once we get numbers back to critical mass all the older Merino ewes will go back to prime lamb production," he said.

Victoria and southern NSW are generally experiencing a "very good season" according to Elders Stud Stock's Ross Milne, and this "alongside a buoyant lamb market should equate to very strong ram sales in the next couple of months".

"The expectations are we should be seeing ram sales on par, if not better, than last year," he said.

"The signs are very positive, and the multi-vendor Merino sales so far achieved solid clearances and averages, with all things pointing to a positive selling season.

"A majority of sales are going to be interfaced with AuctionsPlus with the uncertainty of Covid-19, in conjunction with a lot of studs putting on pre inspection days in the lead up to the sales."

Australian Poll Dorset Association Victorian Board Member Geoff Davey said his season in the Wimmera region had a late start, followed by a very wet July, and the grass was now "really starting to grow".

"The first sucker lambs have hit the market showing plenty of bloom, and selling extremely well," he said.

"The flock ram situation will remain strong, but perhaps not have quite the go as last year - most people have got more (rams), so there will be more rams on the market."

Tasmania APDA Board Member Will Milroy said the weather was a story of two halves in Tassie, with the north experiencing a very wet winter and looking promising for spring, but the south still quite dry.

"There is a lot of confidence in the lamb industry in Tassie - we are always \$50-\$80 behind mainland prices in the saleyards, but lambs being sold over-the-hooks in Victoria are selling well".

Mr Milroy said he could see ram sales being as good if not better than last year, with similar numbers on offer.

"Buyers are looking for a meatier product, a ram that can produce the trade lamb but still an export lamb if required - more moderate in size with adequate muscling," he said.

Western Australia stud stock manager Tim Spicer said from Esperance in the south, to Northampton in the Midwest, things are looking very promising.

"Seasonal conditions across Western Australia are favourable, even though a large number of breeding ewes left the state in the dry season," he says.

"Early favourable seasonal conditions have had a positive effect on condition and size of potential sale teams for the up and coming stud sales.

"The above average lambing percentages are also a real positive out of this good season."

APDA WA Board Member Sascha Squires said lambs had been selling well so far, up around the 820c/kg mark.

"We may lack some ewes this year, so good rams will sell well, and the bottom 20 percent might be harder to move," he said.

"But a lot of studs have dropped their numbers, taking more out earlier when all those ewes headed east last year - we personally would have dropped off 20 per cent more than usual.

"But with lambs being so good, producers will look to stay with terminal sires, and right down south where it is too wet for their crops they are trying to buy in ewes, which might help."

In South Australia, Bill Close, Newbold stud, Gawler River, said it was "great to see a total clearance of Poll Dorset rams in SA last year and we are expecting another good season this year".

"We had a late start to the season but it is excellent now, the lambs are hitting the market a bit later than normal but prices are excellent and so I would expect ram sales to be very good this year," he said.

"Most producers sold all their rams last year, and there should be the same number if not a few more rams offered by breeders this year."





# Konongwootong



Flock No. 4220



## Dorsets

*You are invited to our*

### On Farm OPEN DAY

At Zig Zag Rd, Konongwootong

### Sunday 10<sup>th</sup> October 2021

### At 10-2pm.

*Covid Restrictions will be adhered to, so please contact us if you wish to attend*

### On Farm Annual Sale



### Thursday 21st October

### At 11am.

### 10 Stud Rams 190 Flock Rams

*Alistair and Jessica Sutherland* Phone: (03) 55 750 222 Mob: 0407 551 751

[www.konongwootong.com.au](http://www.konongwootong.com.au)

Bruc.Accred.





# Getting your genetics in sheep shape

### *Courtesy of Meat and Livestock Australia*

Australian Sheep Breeding Values (ASBVs) are now easier to access, understand and apply thanks to the launch of MLA's Sheep Genetics search website in August 2020 and updates made during the first half of 2021.

The improvements were launched before ram sale season and were especially timely as COVID-19 disrupted in-person sale attendances, driving increased online purchasing activity.

The updates have better serviced a growing portfolio of commercial users.

### Key features of the new site include:

- Different data displays for ASBVs to accommodate different learning styles, such as new tables and charts of breeding values for visual learners.
- A more advanced login system, allowing commercial producers to create an account on the site and save previous searches and animals to their account (such as rams for an upcoming sale).
- New percentile highlights and colours are available for animals in the top 5%, 10% and 20%, catering to a greater number of producers with different preferences to view data.
- New sale catalogue and pen card creation tools enable breeders to easily list their animals for sale. Pen cards now also include QR codes that producers can scan at sales or field days to ASBVs on a particular animal.
- The new site is mobile friendly, allowing producers to have round-the-clock access to genetic data for decision-making.
- Updates to the performance of the site, including speed. The serviceability of the site has also been improved following feedback from users.

In addition to the live updates to the platform, Sheep Genetics will be launching a new and improved database system in 2022. This includes improvements incorporated into the search site that will make it easier for breeders and service providers to upload data to the Sheep Genetics database as well as receive reports and results.

MLA's Project Manager – Genetics, Peta Bradley, said along with the new features, the site rework was also about improving user experience.

"The updates have improved the speed at which people can access data significantly, and the new site has been built on updated platforms that greatly improve its serviceability and allow us to continue making improvements to it," Peta said.

"It's allowed us to simplify the language of genetic evaluation and cater to the needs of a range of users, both those who've been exposed to breeding values before and those who are new to it and looking to improve their enterprise through genetics."

To receive **Monthly Updates** from Sheep Genetics on the latest happenings, tools, and events, including new member workshops, subscribe on the Sheep Genetics website - <https://www.sheepgenetics.org.au/news/>

Upcoming analysis dates for 2021 have been released. The deadline for data submission is 5pm AEST and data should be emailed to: [database@sheepgenetics.org.au](mailto:database@sheepgenetics.org.au)

### September

Wednesday 1  
Wednesday 15

### October

Friday 1  
Friday 15

### November

Monday 1  
Monday 15

### December

Wednesday 1  
Wednesday 15

### Are you a new member and want to make the pieces fit?

Sheep Genetics are running an online workshop targeted at new members who are getting started and want to learn more about the process.

When: Thursday 16th September, 2021, 1pm AEST

This workshop will cover:

Getting ASBVs – what goes into your breeding values?

Getting results – how do I access my breeding values?

How does genotyping fit?

Register at <https://www.sheepgenetics.org.au/news/September-new-member-workshop/>



## 1st Annual Ram Sale

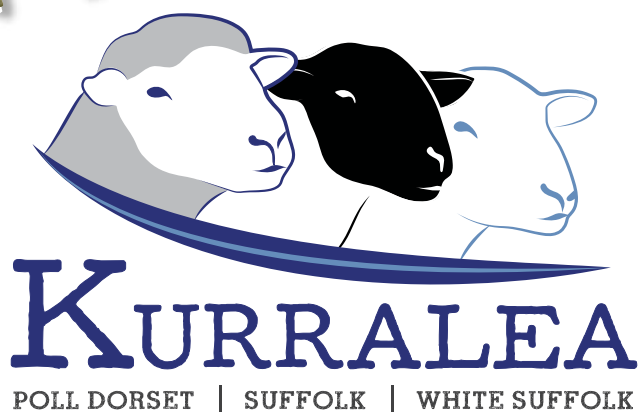
2pm Saturday 6th November

SJ & S Anderson

'Loughrea' 230 Roslyn Rd, Crookwell

**Further Details - Shane - 0408 003 844**





Continuing to produce a unique  
& balanced blend of elite  
performance and structural  
excellence

Our next annual sale will be held on  
**TUESDAY 28TH SEPTEMBER**

Offering approx 350 rams in a 3 breed ram sale  
**12:30pm EST | On-Property at Aria Park, NSW**

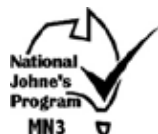


This years sale will  
be interfaced with  
AuctionsPlus.

*For further information & updates,  
check our website or Facebook.*

*Catalogues available on our website,  
or contact us for a catalogue.*

**Semen available from our top group of sires at Kurralea.  
Enquiries also welcome for stud ewes.**



Ben & Lucy Prentice, 'Kurralea', Aria Park, NSW  
Ben: 0429 814 549 Lucy: 0409 544 080 Kim: (02) 6975 2606  
Email: [lucycprentice@gmail.com](mailto:lucycprentice@gmail.com)



**[www.kurralea.com](http://www.kurralea.com)**





# Sheep producers to flock online to improve on-farm biosecurity

*Courtesy of Animal Health Australia*

A new Facebook group has been established by Animal Health Australia (AHA) to provide greater engagement with sheepmeat and wool growers on biosecurity and animal health issues.

Creating the “The Flock Round-up” group is part of a broader engagement strategy being delivered out of the National Sheep Industry Biosecurity Strategy 2019-2024 (NSIBS).

NSIBS was developed by Sheep Producers Australia (SPA) and WoolProducers Australia (WPA) to ensure the sheep industry remains stable and secure into the future, by encouraging sheepmeat and wool growers to take ownership of their own on-farm biosecurity measures and recognise the important role they play.

Access to relevant and timely information is a key part of helping to protect the sheepmeat and wool industries from endemic and exotic disease incursion and spread.

“Facebook is part of many people’s daily lives, and we have seen an increase in the number of producers using the platform to access relevant industry information,” said AHA’s Extension Manager, Emily Buddle.

AHA will share relevant content, with a focus on endemic disease prevention and on-farm biosecurity practices and encourage producers to ask questions and engage with other members of the group.

“A Facebook group is an ideal place for producers to access information and share their own experiences when it comes to animal health and biosecurity” Emily said.

“The team at AHA will be on the other end of the line to help answer any specific questions that may arise.”

AHA, SPA and WPA encourage all those involved in the sheepmeat and wool industry to join the “The Flock Round-up” community - <https://www.facebook.com/groups/theflockroundup>



# WE KNOW WOOL

**Michell Wool is the largest processor of Downs wool in Australia and when you deal direct with us, it supports the Poll Dorset Association.**

**1300 470 655**

**[wool@michell.com.au](mailto:wool@michell.com.au)**



**150 YEARS**  
WE ARE WOOL

**WOOL BUYER • BROKER  
PROCESSOR • EXPORTER**



# Janmac stud champions in trade

***"Keep it simple" has been Janmac stud's secret to success for more than 40 years of Poll Dorset breeding.***

Although current co-principal Grant Hausler admits, some days it seems far from simple.

Grant and Kerry Hausler, alongside Bryce and Hannah Hausler operate Janmac at Goroke in Victoria's Wimmera region.

Soon they will be joined by Grant and Kerry's son Carl, returning to be the third generation of Poll Dorset breeders at the stud.

They were recently awarded the Lambition Zoetis Trade Champion award for their focus on using "on-farm data to demonstrate the superiority of their lamb carcasses".

Brothers Grant and Bryce run their mixed farming business under commercial principles and have what Grant describes as a "relatively simple system".

"Dad was an old fashioned sheep man, and I guess you learn from those around you," he said.

"But never say never - if you always did it the same way you did it then nothing would change."

The Janmac stud was established by Malcolm and Janet Hausler in 1979, as what Grant Hausler describes as a "sideline" for his father.

"It was about the time Poll Dorset was being developed and dad saw an opportunity to breed rams for the neighbours, as there were the odd Poll Dorset or Dorset Horn ram being used in the area," Grant said.

"So he stepped out and put himself on the line to buy ewes and the stud gradually grew in numbers, without sacrificing quality."

Janmac now runs 500 stud ewes, and sold 280 rams, including ram lambs, last selling season, making it a large-scale Poll Dorset stud flock.

Grant says the first priority for the stud is how the animal appears and presents, with Australian Sheep Breeding Values used alongside that.

"We breed the ram that suits the clients - we are a mixed farming area so we are breeding rams that suit multiple functions," he said.


"Some breed suckers at 25-28kg, and then there are croppers that are shearing and turning off lambs at 32-34kg, so we are breeding rams for a range of systems, so as not to cut out any clients.

"We also breed lambs ourselves so as we can see what does work and what doesn't."


As well as the stud Poll Dorsets, Janmac has a self-replacing Merino flock, a first-cross ewe breeding operation (joining Merinos to Border Leicester/East Friesians) and a lamb production flock joining those first-cross ewes to Poll Dorsets.

As 95 per cent of Janmac's Poll Dorset ram clients use them over first-cross ewes, this enables them to get a clear idea of the outcome.


Their Poll Dorset-cross lambs are targeted for the heavy sucker market, with a majority sold over the hooks through forward



**ABERDEEN**  
**POLL DORSET STUD**  
Improving Performance & Profitability



**HOVELL STUD**  
Breeding Innovation.



# ANNUAL COMBINED RAM SALE

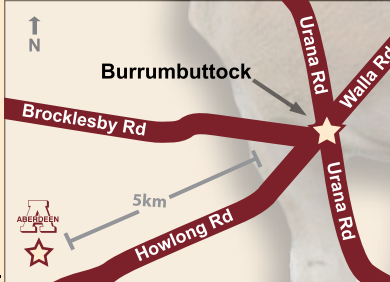
**TUESDAY, 5th OCT 2021 at 1:00PM**


**Featuring 250 Poll Dorset stud and flock rams, and  
70 Border Leicester flock rams.**

**Property "Oak Hill" 1517 Howlong Rd,  
Burrumbuttock, NSW**

**For all enquiries and inspections please contact Rod Frohling  
Mobile: 0428 250 725 or Email: [info@hovellstud.com.au](mailto:info@hovellstud.com.au)**

✱ A COVID Safe Plan and Social Distancing applies.  
Brucellosis Accredited, Y012, and OJD Vaccinated. All Rams are LambPlan tested.





**[www.aberdeenpolldorsets.com.au](http://www.aberdeenpolldorsets.com.au)**

**Ph: 0428 250 725**



## BREEDER PROFILE

contracts at 25-28kg by mid-October.

Those that don't make the cut are shorn and held over as heavy weights.

"One of the things about Poll Dorsets is they've got a second gear - if you haven't quite got them up there, you get the wool off them and put them on some feed and you can get weight in them very quickly," Grant said.

"We value width of loin and depth of body - those two things give high yielding carcasses.

"Janmac rams aren't the longest rams in the country, but long enough for flexibility.

"I think if you can keep the square box it gives yield, and we rate bone in sheep, we believe well boned animals are well muscled animals, which goes back to Dad's way of thinking."

Grant said they also value raw data and target the raw high eye muscle depth and shape in sires, as well as the ASBV's.

As well as liking the predictability of selling lambs direct to processors, Grant said it was also the only way to get some feedback from your lambs - although there was plenty of scope for more.

Janmac bloodlines are influenced by Ulandi Park, Marrabel, South Australia, and Kurralea, Ariah Park, NSW.

"They are the core and we've invested a lot of money into those two studs - buying the square, deeper sheep out of both, and from that base we've bought in other influences," Grant said.

Recently, this has included the top-priced ram from the 2020 Australasian Dorset Sale bred by Rangeview stud, Pipers River, Tasmania.

"And then we complement that with our own rams, as there are plenty of sheep in our own paddock now that are comparable to ones we are spending good money on.

"Once you find something that works for you in your area you'll tend to stick with it, if it is working for you locally you don't need to change it too much, or over complicate it".

One game changing sire that has had an impact at Janmac is Kurralea 11/11, purchased in conjunction with Ulandi Park for \$26,000.

"It was a step-up for us, and showed what you can get out of an elite sheep in terms of bone and muscle, it really showed

what was achievable with those top end sheep and we were luckily to be involved with that ram and Ulandi Park," Grant said.

This year Janmac 190021 has been entered in the Bowen Park Research Flock, a ram bred by the Hauslers and retained in the stud.

"It was a June-drop ram that ended up at 99.5kg by mid-November, it's just always been an awesome sheep and we've already got lambs on the ground by him," Grant said.

"It isn't a competition because everyone wants to get something different out of it - for us it is validation of what we do.

"I think the program has got a massive upside - ideally you'd have 10 Bowen Park flocks, in different climates.

"We sell our lambs and we know about our clients' lambs, but it is hard to get real time data from rams.

"We are now starting to sell stud rams, so through this program we are showing exactly what they can achieve."

The Poll Dorset breed has seen a few major fads in Grant's 30 years of breeding them, starting with the traditional short and stocky type.

"Then we saw the lengthening out of the animal and extreme phase, where they were too long and rangey, and then we came back to somewhere in between," he said.

"Now we are seeing the word moderate being used a fair bit, and more focus on muscle and fat."

Grant said it was crucial for the breed to look at where it had been to see where it was going.

"I wasn't there, but I'm guessing the first Poll Dorsets were little fat bricks, and I don't think we need to go back there, but you have to keep an eye on what works in your area," he said.

"Not every area has a type of ram that suits every other area - it took a long time for very astute breeders to change the Poll Dorset and we don't want to go too far too soon.

"But different types of sheep come and go - one of the things about the PD is there is enough variation that you can choose the road you want - there are options.

"That's why it is so fun trying to breed them - most of the time."



*The Janmac team with volume flock ram buyers at a recent on-property sale.*



Mallee Park



# On Property Sale

**Thursday September 23, 2021  
10am Inspection, 11am Auction  
140 Rams on Offer**



**Tag 187**



**Tag 54**



**Tag 152**



**Tag 69**



**Tag 156**

**Contact Tim to discuss your sheep breeding requirements**

M: 0419 012 883  
E: mallee\_park@yahoo.com.au  
867 Hopetoun/Walpeup Rd  
Hopetoun VIC 3396

**Lambplan Data  
Brucellosis Accredited  
Johne's Vaccinated**



# Poll Dorset win to flush siblings

*Courtesy of Hannah Powe, The Land*

TWO embryo transfer siblings from Tattykeel Poll Dorset stud have come away with top honours in the Poll Dorset show at the NSW State Sheep Show after being described as "two peas in a pod".

"One flush, two stuck and this is the product," Graham Gilmore of Tattykeel said of the consistency of the pair of flush siblings that could not be missed by any onlooker as they shined throughout the Dubbo event.

"Rarely I go for woolly sheep, but that ewe and ram are exceptional - there is nothing to hide on them," judge James Sharpe of Amelie Poll Dorsets, Uralla said.

Off the back of his interbreed supreme sheep exhibit win at the Sydney Royal Show in April, Tattykeel Masterclass 20060 was again unstoppable as he took to the mat.

Claiming champion ram before pipping the ewe for the supreme Poll Dorset exhibit sash, Masterclass did not stop there sweeping the entire show and taking the Gilmore family of Tattykeel to an eighth consecutive win of the Wilson-Tink Memorial Trophy for the supreme sheep exhibit of show.

Sired by Tattykeel Mastermind ET 170014 and out of Tattykeel 140085, the grand ram came out of the ram under 1.5 years class and was described as "one of a kind".

"This ram and his presence is exceptional," Mr Sharpe said.

"The width that he stands with from behind, the muscle depth he carries throughout from the front to the back, right down the hock.

"For a ram to carry that length and still hold himself as well as he does through the top is really exceptional.

"He really is one of a kind."

Following his win of the sheep section, Masterclass then went on to be named the overall supreme inter-species exhibit of the Dubbo Show (p88), with the Gilmore family commenting he would be retained by the stud.

Tattykeel 200079 was the full flush sibling to Masterclass that was announced as the champion Poll Dorset ewe after she impressed judge Mr Sharpe with her carcase and Dorset type.

"Taking nothing away from the ewe, she is exceptional, they are two peas in a pod," he said.

The ewe had previously been shown at Sydney Royal where she was awarded reserve champion ewe.

Embryo technician Peter Lynch from Animal Breeding Services in New Zealand, who was involved in the collection and implantation of the embryos that resulted in the two top Poll Dorset exhibits, was in attendance and watched them sashed.

"I have been involved since day one with the Aussie Whites and Poll Dorsets, first meeting Graham when he first came to New Zealand for Texels," Mr Lynch said.

"Since, we have recovered thousands of embryos."

Tattykeel ET 200033 was the shorn ewe under 1.5 years that was awarded reserve champion ewe, while reserve champion ram went to Tattykeel 200043, a ET bred son of Tattykeel Jackpot that came from the shorn ram under 1.5 years class.

Tattykeel exhibited 16 Poll Dorsets animals in the show, and came away with the group of one ram and two ewes as well as most successful Poll Dorset exhibitor.

Overall 37 Poll Dorsets entries from five exhibitors featured at the 2021 Dubbo event.



*Tattykeel's grand champion ram and ewe held by James and Ross Gilmore, Tattykeel, Oberon, alongside judge James Sharpe, Amelie Poll Dorsets, Uralla.*



# Poll Dorset takes out Victorian Sheep Show interbreed title

*Courtesy of Andrew Miller, Stock & Land*

A "smart and strong" Poll Dorset ram has taken out the interbreed title at the annual Victorian Sheep Show, Ballarat.

Janmac Poll Dorsets' Grant Hausler, Goroke, a member of the judging panel for the interbreed competition, said the event drew good quality exhibits.

"The three sheep, put up for interbreed, were all worthy winners but after a fair bit of discussion, we settled on the Mallee Park Poll Dorset ram," Mr Hausler said.

"We had a Witipoll, the Poll Dorset and a Corriedale, so there were three, quite distinctively different types of sheep.

"There was a shedding breed, against a Corriedale, and you can't get much more different than that."

The judges settled on the Poll Dorset, as he was "a hard sheep to fault.

"He will go on, as a July-drop ram, with plenty of potential to develop further in the coming months.

"He was a very smart, strong and clean Poll Dorset ram."

Mr Hausler said the success of Ballarat augured well for upcoming shows.

"I think people are keen to display their sheep and - more than ever now - to socialise," Mr Hausler said.

"The show was well supported by the general public too.

"It wasn't just exhibitors, there were good numbers of people moving around.

"It's interesting to see the number of people there."

Mallee Park stud co-principal Tim Ferguson, Hopetoun, said about 60-70 sheep were entered in the Poll Dorset section.

"I think breed type and carcase quality got the ram over the line," Mr Ferguson said.

The win was advantageous for both commercial and stud production.

"To go on and get interbreeds is always exciting for the stud," he said.

Mr Ferguson said the sheep had been supplementary fed, for two or three months to bring them up to condition.

"We were probably at the top end of the Poll Dorsets, but to be competitive there and go onto Bendigo you have to have a competitive weight," Mr Ferguson said.

The ram had a terminal carcase production of 138.27, birthweight of .51 kilograms, post-weaning weight of 15.98kg, post-weaning eye muscle depth of 1.15 millimetres, post weaning fat of -1.04mm

He recorded a lean meat yield of 4.07 and intramuscular fat measurement of 0.56mm.

He was sired by Kurralea 160165 out of Mallee Park 150080.

Mr Ferguson said the stud would now go onto the Australian Sheep & Wool Shows.

Other interbreed judges were Jason O'Laughlin, O'Laughlin Wiltshire Horns, Deniliquin, NSW, Tania King, Shellal Poll Dorsets, Hawkesdale and Tess Runting, Moralla Corriedales, Mt Eliza.



*Champion interbreed ram, exhibited by Tim Ferguson, Mallee Park stud, Hopetoun*



*Champion Poll Dorset ewe at the Victorian Sheep Show, held by Tim Ferguson, Mallee Park.*





### **Abelene Park 'Brickman' 39-20.**

Photo at seven weeks old and at Cowra at ten months old, where he won the Junior Performance class and Junior Champion ram.

Sire: 'Aldi' AP228-18

Scanned at Cowra: weight 118kg

EMD: 50

EMW: 106

EMA: 40.8

FAT: 6

Retained in stud - semen for sale

## **Spring Ram and Ewe sale, September 30, 1.30pm**

**Location: "Belaylee", 1171 Nundle Rd, Piallamore NSW**

- **50 Poll Dorset Stud & Flock Rams**
- **10 Poll Dorset Maiden Stud Ewes**

  
AuctionsPlus<sup>™</sup>  
Interfaced with  
AuctionPlus.



In 2020 all our stud rams sold between \$3000-\$6000 - great value - great genetics  
Rams now have LAMBPLAN figures.

**MK and CM Douglas and Family**

**Marshall 0408 961 883**

**[www.abelenepark.com.au](http://www.abelenepark.com.au)**

Check our website and facebook for updates. Contact us for catalogue.

Gudair vaccinated and brucellosis accredited



# Sunnybanks top Campbelltown in 2021

**Judge:** Peter Cain, Glenore, Carisbrook, Victoria.

**Champion Interbreed Group:** Sunnybanks, Penguin, Tas  
**Champion Interbreed Ram:** Sunnybanks

**Champion Ram:** Sunnybanks  
**Reserve:** Killara, Penna, Tas  
**Champion Ewe:** Sunnybanks  
**Reserve:** Sunnybanks

**Ram under 1.5 years:** 1 - Sunnybanks. 2 - Sunnybanks. 3 - Killara.

**Ram under 1.5 years shorn during April:** 1 - Killara. 2 - Sunnybanks. 3 - Lyndowns, Sorell, Tas

**Ram born on or after 1 August previous year:** 1 - Fairbank, Hagley, Tas

**Ewe under 1.5 years:** 1 - Fairbank. 2 - Fairbank

**Ewe under 1.5 years shorn during April:** 1 - Sunnybanks. 2 - Sunnybanks

**Group 1 ram & 2 ewes:** 1 - Sunnybanks. 2 - Fairbank.



*Interbreed champion group from Sunnybank stud, Penguin, Tas*



*Champion Poll Dorset ram and ewe, exhibited by Peter and Paul Day, Sunnybanks stud, Penguin, Tasmania.*

## FarmFest Toowoomba

Chris Rubie of Sovereign Poll Dorsets and Lyndon Frey of Silverdale Poll Dorsets attended FarmFest Toowoomba in June, a three-day event with more than 40,000 attendees.





Flock Number 1

Founded 1917



# Newbold

## ELITE PERFORMANCE & QUALITY

### PROUD FOUNDATION STUD WITH GENETICS FOR THE FUTURE



Tag	Sire	BWT	PWWT	PFAT	PEMD	LEQ	TCP
200044	Newbold 190027	0.22	15.52	-0.32	3.37	151.83	154.99
200665	Newbold 190116	0.59	16.98	-0.50	2.47	144.23	149.42
200158 (pictured)	Newbold 190027	0.59	17.38	-0.71	2.23	140.76	146.86
200400 (pictured)	Newbold 190027	0.55	17.05	-0.43	2.48	140.75	146.34
200225 (pictured)	Newbold 190027	0.30	15.90	0.01	3.09	142.01	145.11
200046 (pictured)	Kurralea 180140	0.50	16.12	-0.32	2.49	135.30	143.56

Full Stud Ram list at [newboldstuds.com](http://newboldstuds.com).

Bid online for on-property  
sale Stud Rams and Ewes

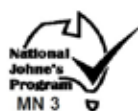


# THURSDAY 23RD SEPTEMBER, 1PM

## 12 STUD RAMS 20 STUD EWES 100 ELITE FLOCK RAMS

Bill Close Gawler River SA | M 0414 813 873 | P (08) 8524 3062  
Craig & Kate McLachlan | Craig 0418 838 751 | Kate 0424 173 276

[bill@newboldstuds.com](mailto:bill@newboldstuds.com)  
[craig@newboldstuds.com](mailto:craig@newboldstuds.com)



OB  
CERT  
#43



[newboldstuds.com](http://newboldstuds.com)



# NSW Dorset Championships has Tattykeel as supreme

*Courtesy of Hannah Powe, The Land*

RETURNING to the NSW Dorset Championships after a nine year break proved to be a worthwhile move for the team at Tattykeel, with both grand champion ram and grand champion ewe going to the Oberon based stud.

Tattykeel 'Della' 200079 exhibited by the Gilmore family was the NSW grand champion Poll Dorset ewe of show that went the whole way to be sashed the Bromar NSW supreme exhibit of the 35th annual Cowra event under judge Paul Brown of Derby Downs stud, Vic.

Sired by Tattykeel Mastermind ET 170014 and out of Tattykeel 140085, the show-stopping ewe has a credible history in the recent months being the supreme champion interbreed ewe of the NSW State Sheep Show at Dubbo and reserve champion Poll Dorset ewe at the Sydney Royal Show.

She was the class winner of the ewe under 1.5 years class.

Grand champion Poll Dorset ram went to the senior champion Tattykeel 200034, that came out of the pair of rams under 1.5 years shorn class.

Intermediate champion ram was Hildden 434 a son of the 2017 NSW Dorset Championships senior champion ram, Hildden 122, exhibited by Brian, Lorraine and James Frost of Hildden Poll Dorsets, Bannister.

It was the Hildden ram's first show, but he will go on to the Australian Sheep and Wool Show and the Australasian Dorset Champions, both at Bendigo, Vic before he sells in the Hildden online sale in September.

Reserve intermediate was Tattykeel 200434, from Tattykeel stud.

The Douglas family of Abelene Park Poll Dorsets, Woolomin, exhibited the junior champion ram, Abelene Park 39-20.

Marshall Douglas of Abelene Park Poll Dorsets, Woolomin, exhibited the junior champion ram, Abelene Park 39.

Marshall Douglas of Abelene Park Poll Dorsets, Woolomin, exhibited the junior champion ram, Abelene Park 39.

Also a ram that make his debut at Cowra over the weekend, he was by Abelene Park 228 that was used heavily, according to Marshall Douglas.

"He (the sire) was a long bodied, well-muscled ram and this is his first progeny to be shown," Mr Douglas said

"We plan to take this ram to the Australasian Dorset show in Bendigo in August.

"He will probably be kept in stud... we have ewes in lamb to him that will lamb in August."

Reserve junior champion ram was Springwaters 627-20 exhibited by the Rowley family of Springwaters Poll Dorsets, Boorowa.

Reserve senior champion ram was Tattykeel 'Masterclass' 200060, a son of Tattykel 'Mastermind'.

He teamed up with the grand champion ewe and supreme exhibit of show to win the Total Ag Solutions NSW mixed pair of the year sash, ahead of a second team from the Tattykeel stall that was made up on the senior and grand champion ram and reserve champion ewe of show.

A group of three progeny from Tattykeel Mastermind exhibited by Tattykeel stud won the sire's progeny group, with a group of Tattykeel Jackpot progeny, also from Tattykeel, placing second.

Tattykeel finished up their weekend receiving the Clipex most successful Poll Dorset exhibitor award and the best strike rate award.

## PERFORMANCE CLASSES

The Gilmore family of Tattykeel Poll Dorsets, Oberon won overall Stockscan champion performance ram with Tattykeel 200072 on 83 points.

From the senior performance class, he weighed 155 kilograms with a eye muscle depth (EMD) of 72 millimetres, an eye muscle width (EMW) of 113mm, an eye muscle area (EMA) of 62.65 square centimetres and fat depth of 11mm.

Reserve champion performance ram went to the intermediate class winner Hildden 534 from the Frost family of Hildden Poll Dorsets, Bannister. Weighing 120.5kg, he measured 53mm EMD, 103 EMW, 42.03 sq cm EMA and 7mm for fat depth.

Junior champion performance ram went to the junior champion ram, Abelene Park 39-20. He weighed 118kg with an EMD of 50mm, EMW of 106mm, EMA of 40.81 sq cm and fat depth of 6mm.



*Grand champion. Judge Paul Brown of Derby Downs Poll Dorsets, Marong, Vic, the supreme exhibit held by James Gilmore, Tattykeel, Oberon and son Hudson, with sponsor Mark Liebich, Bromar.*



## AROUND THE SHOWS



Graham and James Gilmore of Tattykeel Poll Dorsets, Oberon hold the grand champion ewe and grand champion ram of show. The ewe went on to be sashed the Bromar NSW supreme exhibit.



Senior and grand champion ram, held by Graham Gilmore (right), and reserve senior champion ram, held by James and Hudson Gilmore, both exhibited by Tattykeel Stud, Oberon.



Reserve intermediate champion ram exhibited by James Gilmore, Tattykeel stud, Oberon, and intermediate champion ram, exhibited by James Frost, Hillden stud, Bannister.



Reserve junior champion ram exhibited by Dane Rowley, Springwaters stud, Boorowa, and junior champion ram exhibited by Marshall Douglas, Abelen Park, Woolomin

# ARMDALE PARK POLL DORSET STUD

[www.armdalepark.com.au](http://www.armdalepark.com.au)

'QUALITY BREEDS QUALITY'



## ANNUAL STUD & FLOCK RAM SALE

16 STUD RAMS - 180 FLOCK RAMS

**Friday 24th September 2021 - 1pm**

**NEW SALE VENUE**

**On-Property , 'Armdale Park' Berry Jerry Lane - Marrar**



Find us on  
**Facebook**

**Garry Armstrong**

0427 275 134



# Shellal



## 42nd Annual Sale

# TUESDAY 12TH OCTOBER

## On-Property Hawksdale VIC @ 1pm

Offering:

### 5 Stud Rams - 30 Stud Ewes - 100 Flock Rams

All stud rams and ewes will be eligible for full registration and stud transfer, genomic 50k tested and sire verified for your assurance and confidence



TAG	WWT	PWWT	PEMD	LMY	LEQ	TCP
200081tw	11.55 <small>TOP 10%</small>	17.29 <small>TOP 20%</small>	3.14 <small>TOP 10%</small>	4.94 <small>TOP 5%</small>	142.05 <small>TOP 20%</small>	152.18 <small>TOP 10%</small>
200142	10.77 <small>TOP 20%</small>	16.87 <small>TOP 20%</small>	2.93 <small>TOP 20%</small>	5.15 <small>TOP 5%</small>	143.72 <small>TOP 20%</small>	153.29 <small>TOP 10%</small>
200163	11.20 <small>TOP 10%</small>	17.82 <small>TOP 10%</small>	2.30	5.20 <small>TOP 10%</small>	141.33 <small>TOP 20%</small>	151.85 <small>TOP 10%</small>
200164	10.02	16.15	3.10 <small>TOP 10%</small>	4.60 <small>TOP 10%</small>	142.87 <small>TOP 20%</small>	151.96 <small>TOP 10%</small>
200173tw	11.92 <small>TOP 5%</small>	18.23 <small>TOP 5%</small>	2.83 <small>TOP 20%</small>	5.63 <small>TOP 5%</small>	143.51 <small>TOP 20%</small>	154.55 <small>TOP 5%</small>
200230	10.82 <small>TOP 20%</small>	16.47 <small>TOP 20%</small>	2.08	4.59 <small>TOP 10%</small>	138.27	146.93 <small>TOP 20%</small>

**Brucellosis Accredited**

**Contact:** Tania King 0429 720 062  
or Geoff & Pam 03 5560 6241

**Website:** [www.shellal.com](http://www.shellal.com)





# Naracoorte-Hamilton Region Field Day

*Courtesy of Jessica Sutherland*

Despite Covid and all the restrictions imposed upon us at the moment, the Naracoorte Hamilton Region was able to hold a very successful Field Day at the Naracoorte Showgrounds.

Despite Border Crossing issues, having to wear face masks, QR registrations and other inconveniences, about 50 members were able to enjoy a day with fellow breeders. The aim of the field day was to give region members the opportunity to exhibit their rams to other members, learn about the Bowen Park Research Flock and enjoy the company of fellow breeders in a social – but unfortunately restricted – setting.

About 70 rams were on view from 9 different studs. Among those studs were rams from Wrattenbullie, Mullinger Park, Allendale, Moton, Janmac, Zacman, Mullgundawa, Warrawindi and Konongwootong.

Studs had the opportunity to bring three rams out onto the floor for Lachlan Day to assess.

Darren Smith from Shearing World had his ram shearing trailer set up outside. He showed everyone how easy shearing rams can be using his trailer.

A delicious roast lamb roll lunch followed by a video link up with Isabelle Roberts who discussed the aims and progress of the Bowen Park Research Flock.

There was plenty of time for social interaction, “Covid style” throughout the day. Regional Breeders took the opportunity to view and study rams that will be coming up for sale in the next few months, without the pressure of a show or sale ring. Naracoorte Showgrounds was an ideal space for this event with plenty of pens for the rams and plenty of parking for trailers.

This event was the “brainchild” of Rod Davies from the Wrattenbullie Stud. Despite all the hassles of Covid Restrictions, the event was a success and perhaps can be built upon for another year. If you would like to join that discussion or take an interest in running this event again, come along to our region meetings to have your input.



*The next generation with some of the new promotional hats*



*Darren Smith, Shearingworld Naracoorte demonstrating his ram shearing trailer*



*Some of the members who attended the event with new region signage*





# SPRINGWATERS

POLL DORSET STUD EST. 1979

## 18th Annual On-Property Sale Friday 1st October 2021

210 rams ◦ Inspection from 10:30am ◦ Sale 1pm

An opportunity to inspect our top 20 elite stud rams. Also on display will be our 2021 retained sires and mature stud sires. This year all rams offered will be available at our on-property sale, featuring sons of **POCOCK** and **GUINNESS**.

Preview Day  
Thursday 9th September 2021



Guinness SW22-18 and Pocock SW 66-16 semen available

Corcorans Plains, Boorowa, NSW  
Dane Rowley | 0422 560 361 | [springwatersstud.com.au](http://springwatersstud.com.au)



## Bright Side-200017

*Sire: Armdale Park-180028*

*Sire of Dam: Hildden-140070*

**Phone:** Elizabeth 0477 110 081

**Email:** elizabeth.wilkinson@hotmail.com

Genomics tested



## Kurralea-170511

*Sire: Kurralea-160234*

*Sire of Dam: Kurralea-130233*

**TCP:** 137

**LEQ:** 132

**BWT:** 0.4

**PWT:** 16.0

**PEMD:** 1.0

**PFAT:** -0.8

**Phone:** Ben 0429 814 549

**Email:** lucycprentice@gmail.com



## Wunnamurra-190049

*Sire: Wunnamurra-120455*

*Sire of Dam: Wunnamurra-150235*

**EQ:** 162.0

**BWT:** 0.36

**PWWT:** 16.55

**PEMD:** 1.24

**IMF:** +0.72

**SHEARF5:** -2.73

**Phone:** Andrew Gillett 0429 660 584

**Email:** wunnamurra@outlook.com.au



## Ulandi Park-160257tw

*Sire: Ulandi Park-150040*

*Sire of Dam: Ulandi Park-110054*

**TCP:** 148.45

**Dress%:** 2.0

**LMY:** 3.4

**SF5:** 1.6

**LMF:** -0.17

**Phone:** Clayton 0408 852 927

[www.ulandiparkpolldorsets.com.au](http://www.ulandiparkpolldorsets.com.au)





## Valley Vista-200086

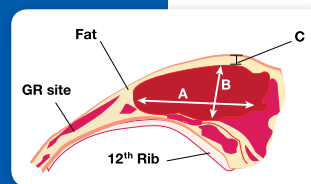
*Sire: Derrynock-180033*

*Sire of Dam: Valley Vista-130713*

EMW: 63	PEMD: 2.78
EMD: 112	PWT: 14.33
EMA: 54.33	TCP: 143.64

**Phone:** Andrew Scott 0419 208 272

**Email:** valleyvista@valleyvista.com.au



## Could you be missing out?

StockScan is the only performance recording system delivering **processed data** on eye-muscle width, depth and area measurements, providing definitive results to achieve:

- MORE MEAT
- HIGHER YIELD CARCASSES

*An on-farm tool used by Stud & Commercial Breeders. Run by dedicated breeders who understand the Prime Lamb Industry.*



Information or scanning bookings contact:  
Julie Davey  
Ph: 03 5452 2438  
Fax: 03 5452 1785  
Mob: 0427 522 438  
Email: stockscan@live.com  
www.stockscanservices.com.au

## Mallee Park-180036

*Sire: Kurralea-160165*

*Sire of Dam: Derrynock-120107*

TCP: 132.93	LEQ: 126.10
BWT: 0.7	PWT: 17.13
PEMD: .22	PFAT: -1.54

**Phone:** Tim 0419 012 883

**Email:** mallee\_park@yahoo.com.au



## Linton-160625

*Sire: Wunnamurra-120455*

*Dam: Linton-130291*

EQ: 174.85	BWT: 0.50
PWT: 18.67	PEMD: 2.91
PFAT: -0.17	IMF: 0.91

\$50 per dose. **Phone:** Damon 0427 972 006

**Email:** canalia@bigpond.com





### Abelene Park-200039 'Brickman'

*Sire: Abelene Park 180228 'Aldi'*

*Sire of Dam: Yentrac-110169*

**EMD: 50**

**EMW: 106**

**EMA: 40.8**

**FAT: 6**

10 month old scan weight 118kg - **\$50 per dose**

**Phone:** Marshall Douglas 0408 961 883

**Email:** abelenepark@gmail.com



### Hildden-190110

*Sire: Hildden-170860*

*Sire of Dam: Hildden-14295*

**Phone:** James 0427 443 134

**Email:** jfrost82@hotmail.com



# Be a WINNER

## Put a Poll Dorset in your corner



[www.polldorset.org.au](http://www.polldorset.org.au)



# Ulandi Park

POLL DORSETS

Flock No. 3125

*- Breeding to Industry Needs -* Founded 1980

**24th Annual On Property Sale**  
**Friday 24th September 2021 - 1.00pm**  
**150 Quality Performance Tested Rams**

**Sale interfaced with:**  **AuctionsPlus™**

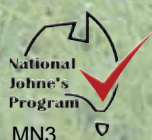
*(Covid-19 restrictions & guidelines applicable at the time will be followed)*

Agents - Elders & Nutrien (3% rebate to outside agents in attendance at vendor's discretion)



Check our website for further information  
Clayton and Andrea Rowett, RSD 33A, Kapunda SA 5373  
(63 Murray's Road, Marrabel)  
(08) 8848 6038 0408 852927

**[www.ulandiparkpolldorsets.com.au](http://www.ulandiparkpolldorsets.com.au)**  
Accredited Brucellosis Free

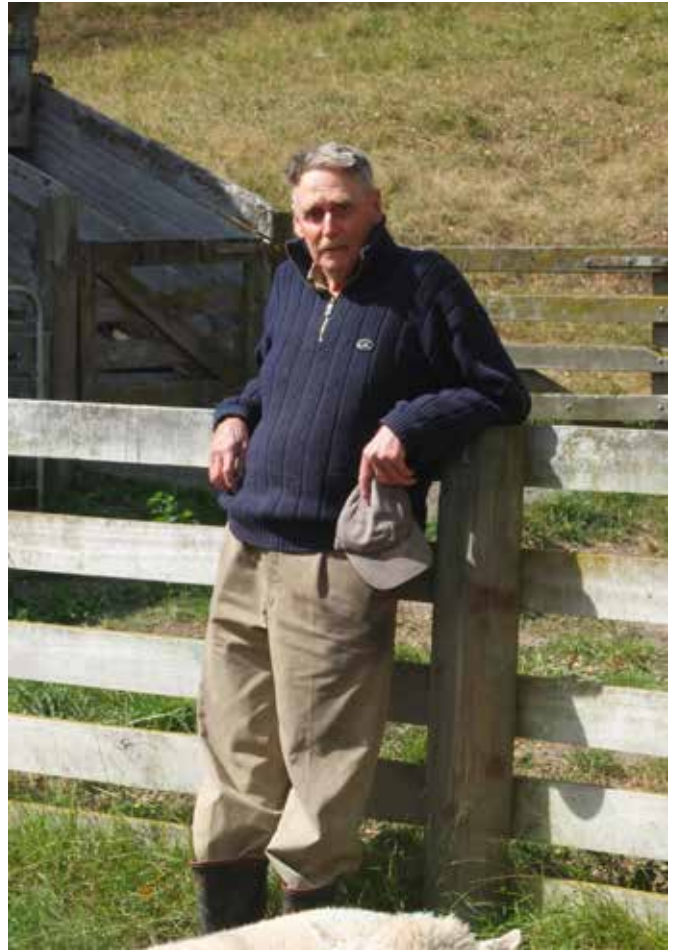




# Obituary Jack Kirk

*Courtesy of Ken Haywood.*


Jack Kirk, New Zealand, established his Dorset Horn flock in 1957 with ewes purchased from an S Fabish who farmed at the base of Mt Taranaki, New Zealand. According to Jack, he had done a good job and they had adjusted to the wet climate. In 1963 he imported five in lamb ewes from L A Stuart in Tasmania and established the Walden Poll Dorset Stud, flock 21. He got a usable ram lamb out of these ewes, which he mated to his Dorset Horns. He told me he worked closely with another Poll Dorset breeder Bruce Jenner, who farmed at Wairoa. He said in those early days they paid \$400 for a ram, going halves. He said that selection priorities were carcass quality and growth rates, which you can see in his stock today. He was an early adopter of performance recording, often in the early days buying semen from older proven sires with good figures. He told me that he thinks he got loinmax in his flock in the early 90's. With increasing age, Jack decided to down size his flock in 2014, ewes and ewe hoggets were sold to a number of breeders. He was nearly 96 when he died, still farming approximately 30 ewes.






# BRUAN


## POLL DORSETS





*"Commercially Focused Seedstock Producers"*

SIG2587516



## ANNUAL SALE

Monday 18th October 2021  
8 Stud Rams & 150 Flock Rams

David and Colleen Gordon  
Phone: 0417 142 863  
Email: [bruanpolldorsets@gmail.com](mailto:bruanpolldorsets@gmail.com)  
[www.bruan.com.au](http://www.bruan.com.au)



# NZ young breeder spotlight

*Courtesy of Sally Rae, Otago Daily Times*

YOUNG New Zealand Poll Dorset breeder Zoe Bain has the breed in her blood.

Zoe (19) is the grand-daughter of Neville and Dianne Greenwood, from the prominent Adelong stud in Canterbury, founded by Neville in 1970.

Last year, Zoe — who works full-time for her grandparents on their property near Christchurch — registered her Broadlands Poll Dorset stud.

Growing up, Zoe always had a pet lamb and was a regular participant at pet days. Her first encounter with the Canterbury A and P Show was in a push chair as a baby.

While at school, she was out on farm every time she had a chance, including school holidays, and she knew that she wanted a job that involved working outside and animals.

She started working for her grandparents a year ago and she was also completing a Primary ITO (Industry Training Organisation) course. She loved her job and was grateful for the opportunity to learn first-hand from Neville and Dianne and have their knowledge passed on. Many years of hard work had gone into the Adelong stud, she said.

In 2019, at the last New Zealand Agricultural Show [formerly Canterbury A and P Show] to be held, Zoe was a junior judge

for the Poll Dorsets, assisting judge Sarah Adams from the Huntingdon stud. Sarah was generous with her time, explaining what she was doing, and she enjoyed the experience.

Zoe liked the Poll Dorset breed for their temperament and also the “fair bit of meat” on them. She was particularly keen on the genetics side of breeding and

enjoyed helping Neville at mating time and seeing how various genetics played out.

While keen to build up her numbers, Zoe did not want to have a huge flock, preferring to concentrate on both the genetics and an even line of sheep. She also had an interest in becoming a stock agent.

She was interested in doing more showing, saying it was good to help urban visitors gain a greater understanding of what happened on farms.

She was also keen to visit Australia at some stage and view the breed there.



## Quietly Achieving Excellence



## 17th ANNUAL ON-PROPERTY RAM SALE WEDNESDAY 6TH OCTOBER 2021

APPROX 220 POLL DORSET,  
WHITE SUFFOLK & SPECIALLY  
SELECTED RAMS  
ON OFFER

AUCTION LIVE - 1PM VIC TIME  
INSPECTION FROM 11AM



"Following on from last years breakout sale more impressive stud prospects will be offered in 2021.

Also featuring an outstanding line-up of impressive commercial rams to suit the most discerning buyer."

Enquiries welcome - Grant and Bryce Hausler  
Grant - 0427 861 013 - Bryce - 0427 861 031  
GOROKE, VICTORIA - JANMAC.COM.AU  
Grant.Hausler@bigpond.com



THIS YEAR BID ONLINE  
VIA AUCTIONSPLUS



# WUNNAMURRA

## POLL DORSET

*"Wunnamurra Rams Breed Better Lambs"*

## ANNUAL RAM SALE

THURSDAY 16TH SEPTEMBER/ 12 NOON AUCTION/ 190 RAMS

[WWW.WUNNAMURRA.COM.AU](http://WWW.WUNNAMURRA.COM.AU)



SALE FEATURING SONS OF  
EATING QUALITY TRAIT LEADER

WUNNAMURRA 120455

-Top Ranked Poll Dorset on IMF

-Top Ranked Terminal Sire

on EQ Index

Selection of rams available at sale

ID	Sire	BWT	WWT	PWT	PEMD	PFAT	DRES	LMY	IMF	SF	TCP	EQ
200024	V492	0.50	12.8	19.5	2.8	-1.18	2.9	5.90	-0.89	6.68	156.3	145.3
200076	W455	0.29	9.6	14.8	2.3	-0.03	1.9	2.15	0.60	-0.69	142.5	148.4
200090	W455	0.39	10.3	16.0	2.0	-0.42	2.2	3.11	0.38	0.10	149.7	153.2
200099	W455	0.41	11.1	17.6	2.3	-0.75	2.4	3.60	0.46	-1.13	157.7	162.0
200107	V492	0.39	12.1	18.8	2.2	-1.37	2.5	5.25	-0.68	3.80	156.8	148.2
200133	V492	0.43	11.6	17.6	3.0	-1.01	2.7	5.24	-0.85	5.40	154.8	144.2
200136	W455	0.29	11.2	17.2	1.9	-1.13	2.2	3.73	0.60	-0.92	156.9	162.9
200173	W455	0.33	10.1	15.5	2.6	-0.71	2.5	3.41	0.34	0.33	152.8	155.9

Home of the  
**Lambex**  
HERO

Andrew Gillett

0429 660 584

Jerilderie, NSW



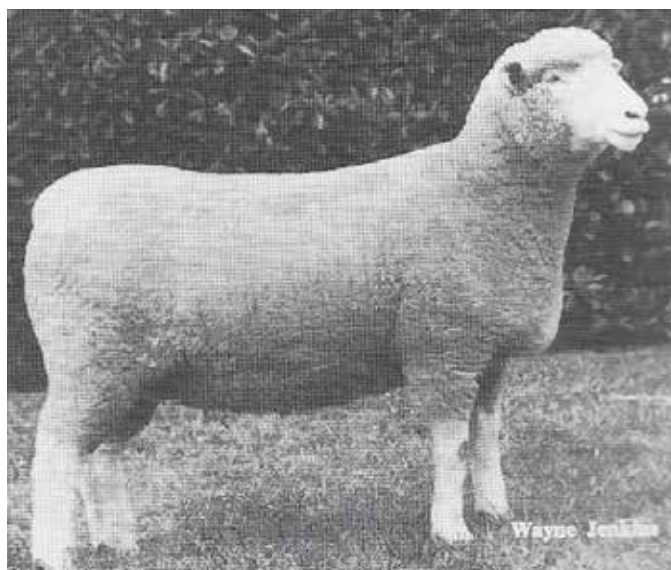
Flock  
3721





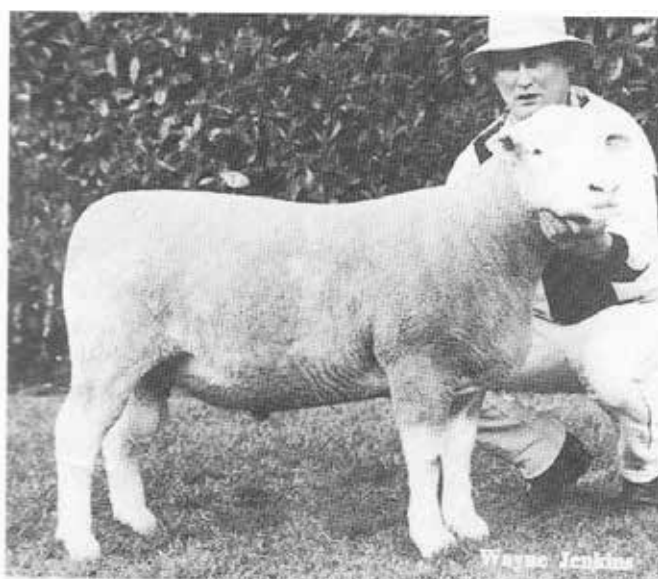
*A look back at our champions from the past*

## Champions at Melbourne Royal 1996



**RENE 100/95**

Champion ewe and interbreed champion ewe exhibited by D.A. & I. M. Mitchell, Eukey, via Stanthorpe, Qld.



**KENTISH DOWNS G190/95**

Champion Ram exhibited by Kentish Downs Stud, Yankalilla, SA.

# WRATTENBULLIE

ANNUAL POLL DORSET RAM SALE

**MONDAY, 11TH OCTOBER 2021**

**1.30pm at Naracoorte Showgrounds**

**6**

**STUD RAMS**

**130**

**FLOCK RAMS**



**Wrattenbullie 200144**

Sire: Derrynock 170809



**Wrattenbullie 200248**

Sire: Wrattenbullie 190587



**Rod Davies 08 8764 6050**

**Brad Davies 0438 266 732**





# YENTRAC

**POLL DORSET STUD**



## ANNUAL SALES 2021

### **SALE ONE**

@ 110 Craven Rd,  
Tatura.

Undercover on  
Wednesday  
September 29th

### **SALE TWO**

@ 876 Ercildoune Rd,  
Burrumbeet.

Undercover on  
Wednesday  
October 20th

Brucellosis Acc. Footrot Free  
OJD approved vaccinates

**R.W. & L.L. McCartney**

**Ph:** Rob 0412 808 082

**Email:** rmccartney4@bigpond.com



LIKE US ON  
FACEBOOK





## SALE DATES

STUD	STATE	DATE	TIME	STUD RAMS	FLOCK RAMS
Dursley	NSW	September 2	11am		60
Rowallan	NSW	September 3			
Ashcharmoo	NSW	September 3	1pm		
Mullinger Park	NSW	September 7			
Marocara	NSW	September 7	2pm		140
Avondale	NSW	September 8			
Ridgehaven	NSW	September 9			
Narranmore	NSW	September 10	2pm		100
Bowan Park (Open Day)	NSW	September 10	12pm		
Ashbank	NSW	September 15	1:30pm		
Badgery	NSW	September 16			
Wunnamurra	NSW	September 16	12pm		190
Gooramma	NSW	September 17	1:30pm		150
Armdale	NSW	September 17			110
Majella	VIC	September 17			
Valma (Online)	TAS	September 20			
Hildden (Online)	NSW	September 21			
Stockdale	WA	September 22	1pm	2	40
Newbold	SA	September 23	1pm	12	100
Mallee Park	VIC	September 23	11am		140
Ashley Park	VIC	September 23			
Coledale	VIC	September 23	1pm		130
Wilgarna	WA	September 24			
Armdale Park	NSW	September 24	1pm	16	180
Ulandi Park	SA	September 24	1pm		150
Gooramma	NSW	September 17	1:30pm		150
Armdale	NSW	September 17	1pm		
Kurralea	NSW	September 28			350
Geejay	VIC	September 28		3	50
Yentrac	VIC	September 29			
Abelene Park	NSW	September 30	1:30pm		50
Springwaters	NSW	October 1	1pm		210
Valley Vista	NSW	October 1	1pm		
Derby Downs	VIC	October 1			
Ilfracombe	VIC	October 4	1pm		100
Rosewood	NSW	October 5	1pm		
Aberdeen	NSW	October 5	1pm		250
Ivadene	VIC	October 5			
Glenore	VIC	October 6			
Kismet	NSW	October 6			
Woolumbool	SA	October 6			
Janmac	VIC	October 6	1pm		220
Icon	VIC	October 7			
Deloraine Downs	VIC	October 8	1pm		



## SALE DATES

STUD	STATE	DATE	TIME	STUD RAMS	FLOCK RAMS
Warrawindi	SA	October 8			
Estjam	VIC	October 8			
Wrattenbullie	SA	October 11	1:30pm	6	130
Mulgundawa	SA	October 11			
Shellal	VIC	October 12	1pm	5	100
Tellarup	WA	October 13			
Englewood Park	VIC	October 13	1pm		
Pepperton	VIC	October 14	1pm		
Derrynock	VIC	October 13	1pm	14	80
Stokesbay Genetics	SA	October 15			
Athlone	VIC	October 15			
Bruan	VIC	October 18		8	150
Jewsharp	VIC	October 19	1pm		
Konongwootong	VIC	October 21	11am	10	190
LSK	VIC	October 22			100
Bright Side (Online)	VIC	October 22			
Hillden	NSW	November 5			
Loughrea	NSW	November 6	2pm		25
Valma	TAS	November 18			
Melton Vale	TAS	November 23			
Warrawindi	SA	November 26			



# ANNUAL on property RAM SALE

1pm at Armdale, Marrar

**Friday 17th September 2021**

**110 Flock Rams**  
**Performance recorded**

**Shirley Armstrong**  
Ph. 0427 275 126  
Shirley@Armdale.com.au

**Sam Mooney**  
Ph: 0419 920 477

Brucellosis accredited Y.099



Gudair Vaccinated





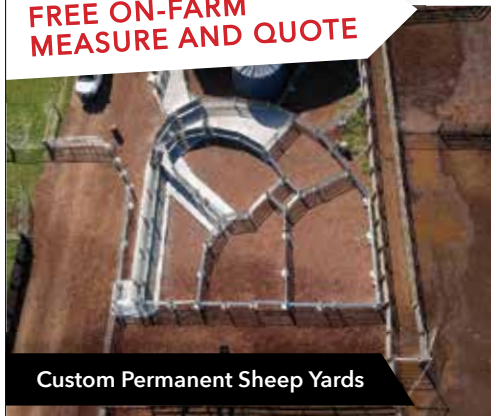
## A TRADITION IN EXCELLENCE

"We are very glad we made this choice. They flow great, and they have dramatically reduced the time it takes us to complete sheep work."

David Ridgway, SA

### QUALITY AUSTRALIAN MADE GRAIN & LIVESTOCK HANDLING EQUIPMENT

**FREE ON-FARM  
MEASURE AND QUOTE**



Custom Permanent Sheep Yards



Shearing Shed Fitouts



Custom Permanent Cattle Yards



Feed-out Bins



Self Propelled Augers



Cattle Crushes

## Why Choose Us?

**Australian made**  
with  
Australian Steel

We have been  
**Manufacturing for**  
nearly 30 years

Reputable  
**Family-owned**  
business

High Quality,  
**Durable products**  
that last



# ADVERTISING RATES

## ADVERTISING RATES

(INCLUDES FULL COLOUR) ALL PRICES BELOW ARE GST INCLUSIVE

	Members	Commercial
Back cover	\$751	\$938
Inside front or back cover	\$601	\$751
Double page spread	\$889	\$1112
Centre spread	\$947	\$1184
Full page	\$543	\$679
Half page	\$358	\$448
Quarter page	\$219	\$274
1/8th page	\$162	\$202

## SERVICE FEES

ALL PRICES BELOW ARE GST INCLUSIVE

The following basic typesetting/layout fees will apply where professional artwork is not supplied:

Full page	\$104.50	Up to 4 photographic scans are included in the service fees.
1/2 page	\$82.50	Additional scans are \$5 each.
1/4 page	\$60.50	
1/8 page	\$49.50	

Service fees do not apply where the complete advertising copy layout is supplied as a high resolution CMYK PDF file.

**PLEASE NOTE: Advertisements:** Print ready advertisements must be supplied as a CMYK (not RGB) PDF. Full page advertisements need a 3mm bleed and crop marks.

**Supplied photographs:** When sending photographs electronically for advertising or editorial use, they need to be at least 1MB in file size and high resolution; and attached as a jpeg file.

**Word, Publisher, Powerpoint and other** file formats **cannot** be used for full production but may be supplied as a layout guide - however, photos must be supplied separately.

## ADVERT SPECIFICATIONS

Full page (full bleed)	303mm deep x 216mm wide
Full page bordered	270mm deep x 182 mm wide
Double page spread	303mm deep x 426mm wide
Half page (H)	130mm deep x 182mm wide
Half page (V)	270mm deep x 88mm wide
Quarter page (V)	130mm deep x 88mm wide
Quarter page (H)	62mm high x 182mm wide
One Eighth page	62mm high x 88mm wide

## ADVERTISING BOOKINGS AND ENQUIRIES

Patrick Falconer, Unit 1/6 Merino Court, East Bendigo, 3550  
Tel: (03) 5443 9902 Email: marketing@polldorset.org.au

## ADVERTISING COPY & MATERIAL

All advertising and service rates are subject to change.

Issue	Advertising material	Date posted
May	Closes April 14	April 28
September	Closes August 8	August 23
December	Closes November 13	November 27

Advertising bookings required a full week before advertising material closing dates.

# “Pepperton” Poll Dorsets



## RAM SALE THURSDAY 14 OCTOBER AT 1PM

On Property and Online  
with Elite Livestock Auctions.

Auctioneers Michael Glasser  
and Elders.

Inspections Saturday 2 and  
Saturday 9 October.

Semen available in Pepperton  
190123

Enquiries always welcome:  
Roger & Dianne Trewick  
Pepperton Farm, Elmore, Vic  
**Mob:** 0428 326 190  
**Email:** pepperton@bigpond.net.au  
**Website:** pepperton.com.au



**Dealers Across  
Australia**



4-6 Grafton Street, PO Box 58  
GRENFELL NSW 2810  
PH: 1300 276 627 F: (02) 6343 2900  
E: sales@bromarengineering.com.au  
W: www.bromarengineering.com.au

## *Innovative Equipment for Farmers of the Future*

### **Bromar Multifeeder**



Available in two sizes 36 Bag & 50 Bag

▪ Prices starting from \$12,945 + GST (\$14,239.50Inc)

#### Available Options

- Batch Weigh Scales
- Tall Auger
- Trail Feed & more
- Contact Bromar for more information and full list of Options

## *Give the Team a call 1300 276 627*

### **Bromar Sheep Lickfeeder**

\*Guaranteed to feed finer rates than any other feeder    ▪ Price starting from \$1,550 + GST (\$1,705Inc)



First Restriction  
Closes top to bottom



Second Restriction  
Closes in sideways



Third Restriction  
Individual feed stations

## **Original 3 Way Restriction System Since 1994**

### **Superior Licking Action**

Grain is right at the top so small lambs can access. Mothers train their lambs to feed when their only a few days old.  
One adjustment and no grain pressure on the adjustment slides

## *Leading Studs Use & Recommend Bromar Products*

▪ All Prices Plus Freight EX Grenfell NSW    \* In clean grain conditions